

GldA protein, His tag (active)

Cat. No. GTX66892-pro**Applications** Functional Assay**Species** E. coli**Package**

20 µg

Applications

Application Note

Specific activity: > 14 Units/ml. One unit will oxidize 1.0 µmole of glycerol to dihydroxyacetone per minute at pH 8.0 at 25°C.

Properties

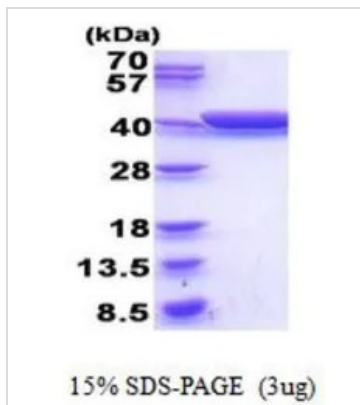
Form Liquid**Buffer** PBS, 10% Glycerol**Preservative** No preservatives**Storage** Store as concentrated solution. Centrifuge briefly prior to opening vial. For short-term storage (1-2 weeks), store at 4°C. For long-term storage, aliquot and store at -20°C or below. Avoid multiple freeze-thaw cycles.**Concentration** 1 mg/ml (Please refer to the vial label for the specific concentration.)**Region/Sequence**

Full length protein, N-terminal His-Tag; Length: 390 a.a. Sequence: MGSSHHHHHH SSGLVPRGSH MGSMDRIQS PGKYIQGADV INRLGEYLPK LAERWLWVGD KFVLGFAQST VEKSFKDAGL VWEIAPFGGE CSQNEIDRLR GIAETAQCGA ILGIGGGKTL DTAKALAHFM GVPVAIAPTI ASTDAPCSAL SVIYTDEGEF DRYLLLNNP NMVIVDTKIV AGAPARLLAA GIGDALATWF EARACSRSGA TTMAGGKCTQ AALALAELCY NTLLEEGERA MLAAEQHVVT PALERVIEAN TYLSGVGFES GGLAAAHAVH NGLTAIPDAH HYYHGEKVAF GTLTQLVLEN APVEEIVTA ALSHAVGLPI TLAQLDIKED VPAKMRIVAE AACAEGETIH NMPGGATPDQ VYAALLVADQ YGQRFLQEW

Expression System E. coli**Purity** > 95% by SDS-PAGE.**Conjugation** Unconjugated**Note** For In vitro laboratory use only. Not for any clinical, therapeutic, or diagnostic use in humans or animals. Not for animal or human consumption.

For full product information, images and publications, please visit our [website](#).

DATA IMAGES

**GTX66892-pro Image**

3 μ g of GTX66892-pro GldA protein (active) by SDS-PAGE under reducing condition and visualized by coomassie blue stain



For full product information, images and publications, please visit our [website](#).