

## Idha protein, His tag (active)

Cat. No. GTX66894-pro

**Applications** Functional Assay**Species** E. coli**Package**

20 µg

## Applications

## Application Note

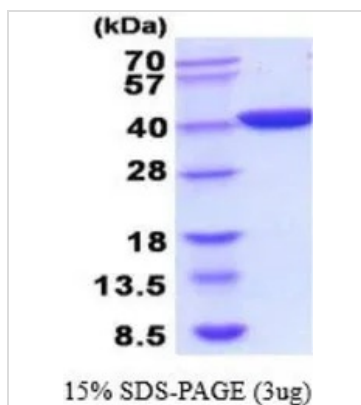
Specific activity is > 200 units/mg, in which one unit will convert 1.0 µmole of pyruvate to L-lactate and beta-NAD per minute at pH 7.5 at 37°C.

## Properties

**Form** Liquid**Buffer** 20mM Tris-HCl, 100mM NaCl, 10% Glycerol**Preservative** No preservatives**Storage** Store as concentrated solution. Centrifuge briefly prior to opening vial. For short-term storage (1-2 weeks), store at 4°C. For long-term storage, aliquot and store at -20°C or below. Avoid multiple freeze-thaw cycles.**Concentration** 1 mg/ml (Please refer to the vial label for the specific concentration.)**Region/Sequence** Full length protein, N-terminal His-Tag; Length: 353 a.a. Sequence: MGSSHHHHHH SSGLVPRGSH MATLKEKLIAPVAEEETVP NNNITVVGVG QVGMACAISI LGKSLADELA LVDVLEDKLK GEMMDLQHGS LFLQTPKIVA DKDYSVTANS KIVVVTAGVR QQEGESRLNL VQRNVNVFKF IIPQIVKYSP DCIIIVVSNP VDILTYVTWK LSGLPKHRVI GSGCNLDSAR FRYLMAEKLGIHPSSCHGWI LGEHGDSSVA VWSGVNVAGV SLQELNPEMG TDNDSENWKE VHKNMVESAY EVIKLKGYN WAIGLSVADL IESMLKNLSR IHPVSTMVKG MYGIENEVFL SLPCILNARG LTSVINQKLK DDEVAQLKKS ADTLWDIQKD LKDL**Expression System** E. coli**Purity** > 95% by SDS-PAGE.**Conjugation** Unconjugated**Note** For In vitro laboratory use only. Not for any clinical, therapeutic, or diagnostic use in humans or animals. Not for animal or human consumption.

For full product information, images and publications, please visit our [website](#).

## DATA IMAGES



### GTX66894-pro Image

3  $\mu$ g of GTX66894-pro Idha protein (active) by SDS-PAGE under reducing condition and visualized by coomassie blue stain



For full product information, images and publications, please visit our [website](#).