

Human Adenosine kinase protein, His tag (active)

Cat. No. GTX66903-pro

Application Functional Assay

Species Human

Package

20 µg

APPLICATION

Application Note

Specific activity is > 30 pmol/min/µg and is defined as the amount of enzyme that convert 1.0 pmole of adenosine to AMP per minute at pH 7.5 at 37°C in a couple system with PK and LDH.

PROPERTIES

Form Liquid

Buffer 20mM Tris-HCl buffer (pH8.0), 1mM DTT, 20% Glycerol, 1mM EDTA, 50mM NaCl

Preservative No preservative

Storage Store as concentrated solution. Centrifuge briefly prior to opening vial. For short-term storage (1-2 weeks), store at 4°C. For long-term storage, aliquot and store at -20°C or below. Avoid multiple freeze-thaw cycles.

Concentration 0.5 mg/ml (Please refer to the vial label for the specific concentration.)

Region/Sequence N-terminal His-Tag; Length: 362 a.a. Sequence: MGSSHHHHHH SSGLVPRGSH MRENILFGMG NPLDISAW DKDFLDKYSL KPNDQILAED KHKELFDELV KFKVEYHAG GSTQNSIKVA QWMIQPHKA ATFFGCIGID KFGELKRKA AEAHVDAHYY EQNEQPTGTC AACITGDNRS LIANLAAANC YKKEKHLDE KNWMLVEKAR VCYIAGFFLT VSPESVLKVA HHAENNRIF TLNLSAPFIS QFYKESLMKV MPYVDILFGN ETEAATFARE QGFETKDIKE IAKKTQALPK MNSKRQRIVI FTQGRDDTIM ATESEVTAFV VLDQDQKEII DTNGAGDAFV GGFLSQLVSD KPLTECIRAG HYAASIIIRR TGCTFPEKPD FH

Expression System E. coli

Purity > 95% by SDS-PAGE.

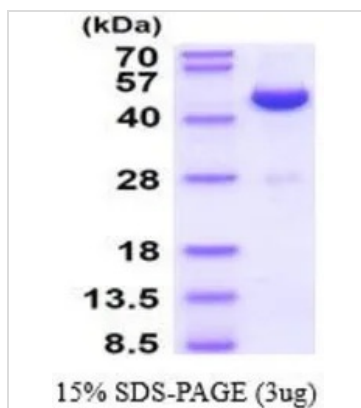
Conjugation Unconjugated

Note For In vitro laboratory use only. Not for any clinical, therapeutic, or diagnostic use in humans or animals. Not for animal or human consumption.



For full product information, images and publications, please visit our [website](https://www.genetex.com).

DATA IMAGES



GTX66903-pro Image

3 μ g of GTX66903-pro Human Adenosine kinase protein (active) by SDS-PAGE under reducing condition and visualized by coomassie blue stain



For full product information, images and publications, please visit our [website](#).