

Human Adenylate kinase 2 protein, His tag (active)

Cat. No. GTX66907-pro

Applications Functional Assay**Species** Human**Package**

100 µg

Applications

Application Note

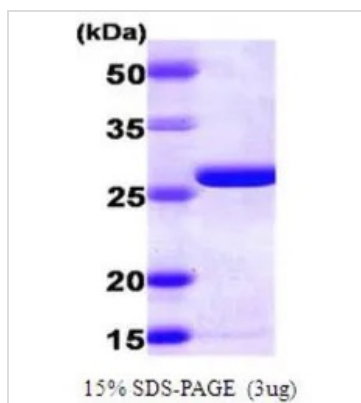
Specific activity is > 25 units/mg. One unit will convert 2.0 µmoles of ADP to ATP + AMP per minute at pH 7.5 at 37°C.

Properties

Form Liquid**Buffer** PBS, 20% Glycerol, 2mM DTT**Preservative** No preservatives**Storage** Store as concentrated solution. Centrifuge briefly prior to opening vial. For short-term storage (1-2 weeks), store at 4°C. For long-term storage, aliquot and store at -20°C or below. Avoid multiple freeze-thaw cycles.**Concentration** 1 mg/ml (Please refer to the vial label for the specific concentration.)**Region/Sequence** Full length protein, N-terminal His-Tag; Length: 259 a.a. Sequence: MGSSHHHHHH SGLVPRGSH MAPSVPAEEP EYPKGIRAVL LGPPGAGKGT QAPRLAENFC VCHLATGDML RAMVASGSEL GKCLKATMDA GKLVSDEMVA ELIEKNLETP LCKNGFLLDG FPRTVRQAEM LDDLMEKRKE KLDSVIEFSI PDSLLIRIT GRLIHPKSGR SYHEEFNPPK EPMKDDITGE PLIRRSDDNE KALKIRLQAY HTQTPLIEY YRKRGIHSAI DASQTPDVVF ASILAAFSKA TCKDLVMFI**Expression System** E. coli**Purity** > 95% by SDS-PAGE.**Endotoxin** < 1.0 EU/µg (determined by LAL method)**Conjugation** Unconjugated**Note** For In vitro laboratory use only. Not for any clinical, therapeutic, or diagnostic use in humans or animals. Not for animal or human consumption.

For full product information, images and publications, please visit our [website](#).

DATA IMAGES



GTX66907-pro Image

3 μ g of GTX66907-pro Human Adenylate kinase 2 protein (active) by SDS-PAGE under reducing condition and visualized by coomassie blue stain



For full product information, images and publications, please visit our [website](#).