

Mouse Akr1b1 protein, His tag (active)

Cat. No. GTX66909-pro

Applications	Functional Assay
Species	Mouse

Package
100 µg

Applications

Application Note

Specific activity is > 500 pmol/min/µg, and is defined as the amount of enzyme that catalyze the reduction of 1.0 pmole DL-glyceraldehyde in the presence of NADPH per minute at pH 7.0 at 37°C.

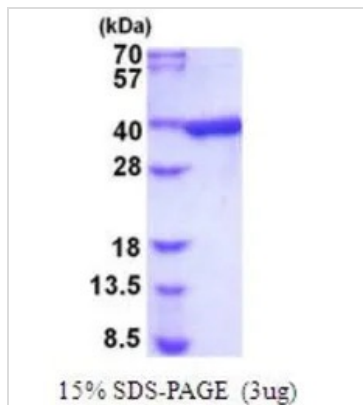
Properties

Form	Liquid
Buffer	PBS, 10% Glycerol
Preservative	No preservatives
Storage	Store as concentrated solution. Centrifuge briefly prior to opening vial. For short-term storage (1-2 weeks), store at 4°C. For long-term storage, aliquot and store at -20°C or below. Avoid multiple freeze-thaw cycles.
Concentration	1 mg/ml (Please refer to the vial label for the specific concentration.)
Region/Sequence	Full length protein, N-terminal His-Tag; Length: 339 a.a. Sequence: MGSSHHHHHH SSGLVPRGSH MGSMASHLEL NNGTKMPTLG LGTWKSPPGQ VTEAVKVAID LGYRHIDCAQ VYQNEKEGV ALQEKLEQV VKRQDLFIVS KIWCTFHDKS MVKGAFQKTL SDLQLDYLDL YLIHWPTGFK PGPDYFPLDA SGNVPSDTD FVDWTAMEQ LVDEGLVKTI GVSNNFNPLQI ERILNKPKLK YKPAVNQIEC HPYLTQEKLI EYCHSKGIVV TAYSPLGSPD RPWAKPEDPS LLEDPRIKAI AAKYNKTTAQ VLIRFPIQRN LVVIPKSVTP VRIAENLKV FDFVSSDMA TLLSYNRNWR VCALMSCAKH KDYPFHAEV
Expression System	E. coli
Purity	> 95% by SDS-PAGE.
Conjugation	Unconjugated
Note	For In vitro laboratory use only. Not for any clinical, therapeutic, or diagnostic use in humans or animals. Not for animal or human consumption.



For full product information, images and publications, please visit our [website](https://www.genetex.com).

DATA IMAGES



GTX66909-pro Image

3 μ g of GTX66909-pro Mouse Akr1b1 protein (active) by SDS-PAGE under reducing condition and visualized by coomassie blue stain



For full product information, images and publications, please visit our [website](#).