

Human AKR7A3 protein (active)

Cat. No. GTX66918-pro

Applications Functional Assay**Species** Human**Package**

5 µg

Applications

Application Note

Specific activity is > 800 pmol/min/µg, and is defined as the amount of enzyme that catalyze the reduction 1.0 pmole of 1,2-Naphthoquinone presence of NADPH per minute at pH 7.0 at 25°C.

Properties

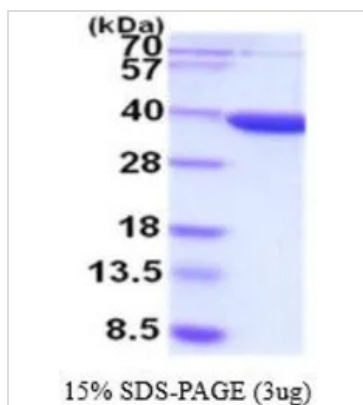
Form Liquid**Buffer** 20mM Tris-HCl, 10% Glycerol**Preservative** No preservatives**Storage** Store as concentrated solution. Centrifuge briefly prior to opening vial. For short-term storage (1-2 weeks), store at 4°C. For long-term storage, aliquot and store at -20°C or below. Avoid multiple freeze-thaw cycles.**Concentration** 1 mg/ml (Please refer to the vial label for the specific concentration.)**Region/Sequence**

Full length protein, Length: 331 a.a. Sequence: MSRQLSRARP ATVLGAMEMG RRMDAPTSAA VTRAFLEGRH TEIDTAFVYS
EGQSETILGG LGLRLGGSDC RVKIDTKAIP LFGNSLKPDS LRFQLETSK RLQCPRVDLF YLHMPDHSTP VEETLRACHQ LHQEGKFVEL
GLSNYAAWEV AEICTLCKSN GWILPTVYQG MYNAITRQVE TELFPCLRHF GLRFYAFNPL AGLLTGKYK YEDKDGKQPV
GRFFGNTWAE MYRNRWYKEH HFEGIALVEK ALQAAYGASA PSMTSATLRW MYHHSQQLQA HGDVILGMS SLEQLEQNLA
AAEEGPLEPA VDAFNQAWH LVAHECPNYF R

Expression System E. coli**Purity** > 90% by SDS-PAGE.**Endotoxin** < 1.0 EU/µg (determined by LAL method)**Conjugation** Unconjugated**Note** For In vitro laboratory use only. Not for any clinical, therapeutic, or diagnostic use in humans or animals. Not for animal or human consumption.

For full product information, images and publications, please visit our [website](#).

DATA IMAGES



GTX66918-pro Image

3 µg of GTX66918-pro Human AKR7A3 protein (active) by SDS-PAGE under reducing condition and visualized by coomassie blue stain



For full product information, images and publications, please visit our [website](https://www.genetex.com).