

## Human Carbonic Anhydrase XII protein, His tag (active)

Cat. No. GTX66937-pro

**Applications** Functional Assay**Species** Human**Package**

50 µg

## Applications

## Application Note

Specific activity is > 300 pmol/min/µg, and is defined as the amount of enzyme that hydrolyze 1.0 pmole of 4-nitrophenyl acetate to 4-nitrophenol per minute at pH 7.5 at 37°C.

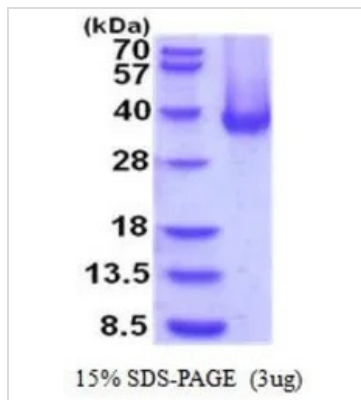
**Observed MW (kDa)** 28-40 kDa.

## Properties

**Form** Liquid**Buffer** PBS, 10% Glycerol**Preservative** No preservatives**Storage** Store as concentrated solution. Centrifuge briefly prior to opening vial. For short-term storage (1-2 weeks), store at 4°C. For long-term storage, aliquot and store at -20°C or below. Avoid multiple freeze-thaw cycles.**Concentration** 0.5 mg/ml (Please refer to the vial label for the specific concentration.)**Region/Sequence** C-terminal His-Tag; Length: 283 a.a. Sequence: APVNGSKWTY FGPDGENSWS KKYPSCGGLL QSPIDLHSDI LQYDASLTPL EFQGYNLSAN KQFLTNNGH SVKLNLPSPDM HIQGLQSRYS ATQLHLHWGN PNDPHGSEHT VSGQHFAAEL HIVHYNSDLY PDASTASNKS EGLAVLAVLI EMGSFNPSYD KIFSHLQHVK YKGQEA FVPG FNIEELLPER TAEYYRYRGS LTTNPCNPTV LWTVFRNPVQ ISQEQLLALE TALYCTHMDD PSPREMINNF RQVQKFDERL VYTSFSQVQV CTAAGLSHHH HHH**Expression System** Baculovirus**Purity** > 90% by SDS-PAGE.**Endotoxin** < 1.0 EU/µg (determined by LAL method)**Conjugation** Unconjugated**Note** For In vitro laboratory use only. Not for any clinical, therapeutic, or diagnostic use in humans or animals. Not for animal or human consumption.

For full product information, images and publications, please visit our [website](#).

## DATA IMAGES



### GTX66937-pro Image

3  $\mu$ g of GTX66937-pro Human Carbonic Anhydrase XII protein (active) by SDS-PAGE under reducing condition and visualized by coomassie blue stain



For full product information, images and publications, please visit our [website](https://www.genetex.com).