

Mouse Cathepsin D protein, His tag (active)

Cat. No. GTX66940-pro

Applications Functional Assay**Species** Mouse**Package**

5 µg

Applications

Application Note

Specific activity is > 1000 pmol/min/µg in which one unit will convert 1.0 pmole of Mca-PLGL-Dpa-AR-NH₂ to MCA- Pro-Leu-OH per minute at pH 3.5 at 25°C.

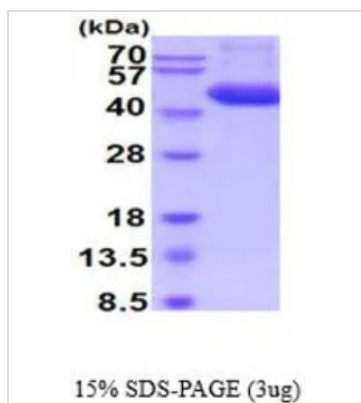
Observed MW (kDa) 40-57 kDa.

Properties

Form Liquid**Buffer** PBS, 10% Glycerol**Preservative** No preservatives**Storage** Store as concentrated solution. Centrifuge briefly prior to opening vial. For short-term storage (1-2 weeks), store at 4°C. For long-term storage, aliquot and store at -20°C or below. Avoid multiple freeze-thaw cycles.**Concentration** 0.25 mg/ml (Please refer to the vial label for the specific concentration.)**Region/Sequence** C-terminal His-Tag; Length: 398 a.a. Sequence: IIRIPLRKFT SIRRTMTEVG GSVEDLILKG PITKYSMQSS PKTTEPVSEL LKNYLDAQYY GDIGIGTPPQ CFTVVFDTGS SNLWVPSIHC KILDIAWVH HKYNSDKSST YVKNGTSGDI HYGSGSLSGY LSQDTVSVPC KSDQSKARGI KVEKQIFGEA TKQPGIVFVA AKFDGILGMG YPHISVNNVL PVFDNLMQQK LVDKNIFSFY LNRDPEGQPG GELMLGGTDS KYHGGELSYL NVTRKAYWQV HMDQLEVGNE LTLCKGGCEA IVDGTGSLLV GPVEEVKELQ KAIGAVPLIQ GEYMIPCEKV SSLPTVYLKL GGKNYELHPD KYILKVSQGG KTICLSGFMG MDIPPPSGPL WILGDVFIGS YTVFDRDNN RVGFANAVL LEHHHHHH**Expression System** Baculovirus**Purity** > 90% by SDS-PAGE.**Endotoxin** < 1.0 EU/µg (determined by LAL method)**Conjugation** Unconjugated**Note** For In vitro laboratory use only. Not for any clinical, therapeutic, or diagnostic use in humans or animals. Not for animal or human consumption.

For full product information, images and publications, please visit our [website](#).

DATA IMAGES



GTX66940-pro Image

3 μ g of GTX66940-pro Mouse Cathepsin D protein (active) by SDS-PAGE under reducing condition and visualized by coomassie blue stain



For full product information, images and publications, please visit our [website](#).