

Human CDA protein, His tag (active)

Cat. No. GTX66943-pro

Applications Functional Assay

Species Human

Package

100 µg

Applications

Application Note

Specific activity is > 10000 pmol/min/µg, and is defined as the amount of required to deaminate 1.0 pmole of cytidine per min at pH 7.5 at 25°C.

Properties

Form Liquid

Buffer 20mM Tris-HCl, 100mM NaCl, 40% Glycerol, 1mM DTT, 2mM EDTA

Preservative No preservatives

Storage Store as concentrated solution. Centrifuge briefly prior to opening vial. For short-term storage (1-2 weeks), store at 4°C. For long-term storage, aliquot and store at -20°C or below. Avoid multiple freeze-thaw cycles.

Concentration 0.5 mg/ml (Please refer to the vial label for the specific concentration.)

Region/Sequence Full length protein, N-terminal His-Tag; Length: 166 a.a. Sequence: MGSSHHHHHH SSGLVPRGSH MAQKRPACTL KPECVQQLLV CSQEAQQSAY CPYSHFPVGA ALLTQEGRIF KGCNIENACY PLGICAERTA IQKAVSEGYK DFRAIAIASD MQDDFISPCG ACRQVMREFG TNWPVYMTKP DGTIVMTVQ ELLPSSFGPE DLQKTQ

Expression System E. coli

Purity > 90% by SDS-PAGE.

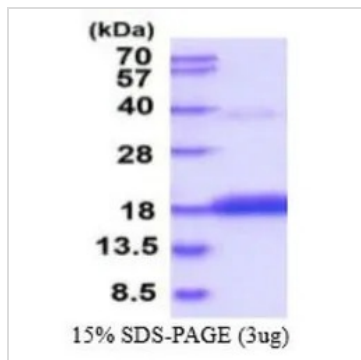
Conjugation Unconjugated

Note For In vitro laboratory use only. Not for any clinical, therapeutic, or diagnostic use in humans or animals. Not for animal or human consumption.



For full product information, images and publications, please visit our [website](#).

DATA IMAGES



GTX66943-pro Image

3 µg of GTX66943-pro Human CDA protein (active) by SDS-PAGE under reducing condition and visualized by coomassie blue stain



For full product information, images and publications, please visit our [website](#).