

Human Creatine kinase MT 1A protein, His tag (active)

Cat. No. GTX66950-pro

Applications Functional Assay**Species** Human**Package**

100 µg

Applications

Application Note

Specific activity is > 50 units/mg, and is defined as the amount of enzyme that convert 1.0 µmole of phosphate from phosphocreatine to ADP per minute at pH 7.5 at 37°C.

Properties

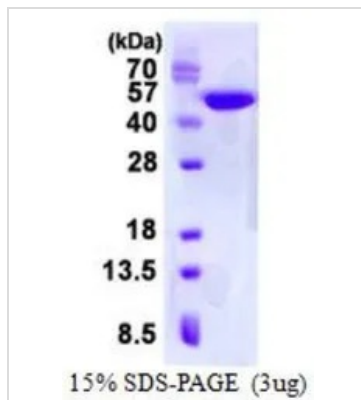
Form Liquid**Buffer** 20mM Tris-HCl, 150mM NaCl, 10% Glycerol**Preservative** No preservatives**Storage** Store as concentrated solution. Centrifuge briefly prior to opening vial. For short-term storage (1-2 weeks), store at 4°C. For long-term storage, aliquot and store at -20°C or below. Avoid multiple freeze-thaw cycles.**Concentration** 1 mg/ml (Please refer to the vial label for the specific concentration.)**Region/Sequence**

N-terminal His-Tag; Length: 403 a.a. Sequence: MGSSHHHHHH SSGLVPRGSH MGSHMASERR RLYPPSAEYP DLRKHNNCMA SHLTPAVYAR LCDKTTPTGW TLDQCIQTGV DNP GHPFIKT VGMVAGDEET YEVFADLFDP VIQERHNGYD PRMTKHHTDL DASKIRSGYF DERYVLSSRV RTGRSIRGLS LPPACTRAER REVERVVDA LSGLKGDLAG RYRLSEMTE AEQQQLIDDH FLFDKPV SPL LTAAGMARDW PDARGIWHNN EKSLI WVNE EDHTRVISM KGGNMKRVFE RFCRGLKEVE RLQERGWEF MWNERLG YIL TCPSNLGTGL RAGVHIK LPL LSKDSRFPKI LENLRLQKRG TGGVDTAATG GVFDISNLDR LGKSEVELVQ LVIDGVNYLI DCERRLERGQ DIRIPTPVIH TKH

Expression System E. coli**Purity** > 95% by SDS-PAGE.**Conjugation** Unconjugated**Note** For In vitro laboratory use only. Not for any clinical, therapeutic, or diagnostic use in humans or animals. Not for animal or human consumption.

For full product information, images and publications, please visit our [website](#).

DATA IMAGES



GTX66950-pro Image

3 μ g of GTX66950-pro Human Creatine kinase MT 1A protein (active) by SDS-PAGE under reducing condition and visualized by coomassie blue stain



For full product information, images and publications, please visit our [website](https://www.genetex.com).