

Human Cyclophilin 40 protein, His tag (active)

Cat. No. GTX66952-pro

Applications Functional Assay**Species** Human**Package**

100 µg

Applications

Application Note

Specific activity is > 700 nmol/min/mg, and is defined as the amount of enzyme that cleaves 1nmole of suc-AAFP-PNA per minute at 37°C in Tris-HCl (pH 8.0) using chymotrypsin.

Properties

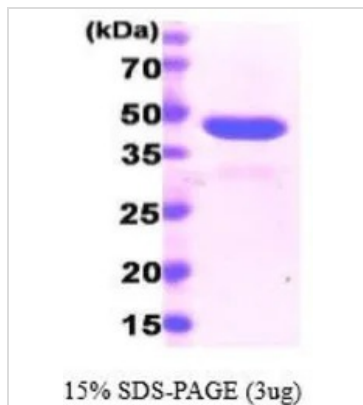
Form Liquid**Buffer** PBS, 10% Glycerol**Preservative** No preservatives**Storage** Store as concentrated solution. Centrifuge briefly prior to opening vial. For short-term storage (1-2 weeks), store at 4°C. For long-term storage, aliquot and store at -20°C or below. Avoid multiple freeze-thaw cycles.**Concentration** 1 mg/ml (Please refer to the vial label for the specific concentration.)**Region/Sequence**

Full length protein, N-terminal His-Tag; Length: 390 a.a. Sequence: MGSSHHHHHH SGLVPRGSH MSHPSQAKP
SNPSNPRVFF DVDIGGERVG RIVLELFADI VPKTAENFRA LCTGEKGIGH TTGKPLHFKG CPFHRIKKF MIQGGDFSNQ
NGTGGESIYG EKFEDEFHY KHDREGLLSM ANAGRNTNGS QFFITVPTP HLDGKHVVFG QVIKIGIGVAR ILENVEVKGE
KPAKLCVIAE CGELKEGDDG GIFPKDGSGD SHPDFPEDAD IDLKDVVKIL LITDLKNIG NTFFKSQNW MAIKKYAEVL
RYVDSSKAVI ETADRAKLQP IALSCVLNIG ACKLKMSNWQ GAIDSCLEAL ELDPSNTKAL YRRAQGWQGL KEYDQALADL
KKAQGIAPED KAIQAELLKV KQKIKAQKDK EKAVYAKMFA

Expression System E. coli**Purity** > 95% by SDS-PAGE.**Endotoxin** < 1.0 EU/µg (determined by LAL method)**Conjugation** Unconjugated**Note** For In vitro laboratory use only. Not for any clinical, therapeutic, or diagnostic use in humans or animals. Not for animal or human consumption.

For full product information, images and publications, please visit our [website](#).

DATA IMAGES



GTX66952-pro Image

3 μ g of GTX66952-pro Human Cyclophilin 40 protein (active) by SDS-PAGE under reducing condition and visualized by coomassie blue stain



For full product information, images and publications, please visit our [website](#).