

Human Cyclophilin A protein, His tag (active)

Cat. No. GTX66954-pro

Applications Functional Assay**Species** Human**Package**

100 µg

Applications

Application Note

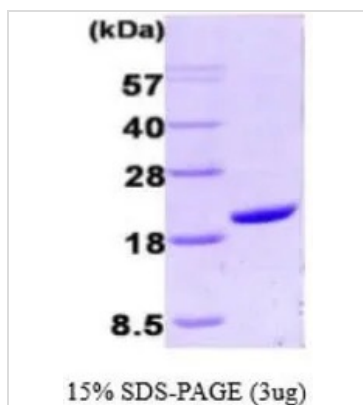
Specific activity is > 650 nmol/min/mg, and is defined as the amount of enzyme that cleaves 1nmole of suc-AAFP-PNA per minute at 37°C in Tris-HCl (pH 8.0) using chymotrypsin.

Properties

Form Liquid**Buffer** 20mM Tris, 20mM NaCl, 10% Glycerol, 0.5mM DTT**Preservative** No preservatives**Storage** Store as concentrated solution. Centrifuge briefly prior to opening vial. For short-term storage (1-2 weeks), store at 4°C. For long-term storage, aliquot and store at -20°C or below. Avoid multiple freeze-thaw cycles.**Concentration** 1 mg/ml (Please refer to the vial label for the specific concentration.)**Region/Sequence** Full length protein, N-terminal His-Tag; Length: 185 a.a. Sequence: MGSSHHHHHH SSGLVPRGSH MVNPTVFFDI
AVDGEPLGRV SFELFADKVP KTAENFRALS TGEKGFYKYG SCFHRIIPGF MCQGGDFTRH NGTGGKSIYG EKFEDENFIL
KHTGPGILSM ANAGPNTNGS QFFICTAKTE WLDGKHVVFG KVKEGMNIVE AMERFGSRNG KTSKKITIAD CGQLE**Expression System** E. coli**Purity** > 95% by SDS-PAGE.**Endotoxin** < 1.0 EU/µg (determined by LAL method)**Conjugation** Unconjugated**Note** For In vitro laboratory use only. Not for any clinical, therapeutic, or diagnostic use in humans or animals. Not for animal or human consumption.

For full product information, images and publications, please visit our [website](#).

DATA IMAGES



GTX66954-pro Image

3 μ g of GTX66954-pro Human Cyclophilin A protein (active) by SDS-PAGE under reducing condition and visualized by coomassie blue stain



For full product information, images and publications, please visit our [website](#).