

## Human Cyclophilin E protein, His tag (active)

Cat. No. GTX66957-pro

**Applications** Functional Assay**Species** Human**Package**

100 µg

## Applications

## Application Note

Specific activity is > 210 nmoles/min/µg, and is defined as the amount of enzyme that cleaves 1.0 µmole of suc-AAFP-pNA per minute at 1C in Tris-HCl (pH 8.0) using chymotrypsin.

## Properties

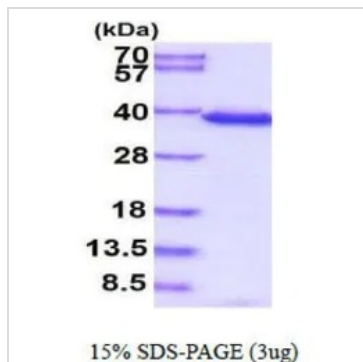
**Form** Liquid**Buffer** 20mM Tris**Preservative** No preservatives**Storage** Store as concentrated solution. Centrifuge briefly prior to opening vial. For short-term storage (1-2 weeks), store at 4°C. For long-term storage, aliquot and store at -20°C or below. Avoid multiple freeze-thaw cycles.**Concentration** 1 mg/ml (Please refer to the vial label for the specific concentration.)**Region/Sequence**

Full length protein, N-terminal His-Tag; Length: 337 a.a. Sequence: MRGSHHHHHH GMASMTGGQQ MGRDLYDDDD KDRWGSMATT KRVLYVGGLA EEVDDKVLHA AFIPFGDITD IQIPLDYETE KHRGFVFEV ELAEDAAAAI DNMNESELF RTIRVNLAKP MRIEGSSRP VWSDDDWLKK FSGKLEENK EEGSEPPKA ETQEGEPIAK KARSNPQVYM DIKIGNKPAG RIQMLLRSDV VPMTAENFRC LCTHEKGFGF KGSSFHRIIP QFMCQGGDFT NHNGTGGKSI YGKKFDDENF ILKHTGPGLL SMANSGPNTN GSQFFLTCDK TDWLDGKHVV FGEVTEGLDV LRQIEAQGSK DGKPKQKVII ADCGEYV

**Expression System** E. coli**Purity** > 95% by SDS-PAGE.**Conjugation** Unconjugated**Note** For In vitro laboratory use only. Not for any clinical, therapeutic, or diagnostic use in humans or animals. Not for animal or human consumption.

For full product information, images and publications, please visit our [website](#).

## DATA IMAGES



### GTX66957-pro Image

3 µg of GTX66957-pro Human Cyclophilin E protein (active) by SDS-PAGE under reducing condition and visualized by coomassie blue stain



For full product information, images and publications, please visit our [website](https://www.genetex.com).