

## Human DcR2 / CD264 protein, human IgG1 Fc and His tag (active)

**Cat. No. GTX66967-pro****Applications** Functional Assay**Species** Human**Package**

10 µg

## Applications

**Application Note**

Measured in a neutralizing assay using Jurkat human T lymphocyte. The ED<sub>50</sub> for this effect is less or equal to 10 ng/ml in the presence of 2 ng/ml TRAIL.

**Observed MW (kDa)** 40-57 kDa.

## Properties

**Form** Liquid**Buffer** PBS, 10% Glycerol**Preservative** No preservatives**Storage** Store as concentrated solution. Centrifuge briefly prior to opening vial. For short-term storage (1-2 weeks), store at 4°C. For long-term storage, aliquot and store at -20°C or below. Avoid multiple freeze-thaw cycles.**Concentration** 0.5 mg/ml (Please refer to the vial label for the specific concentration.)**Region/Sequence**

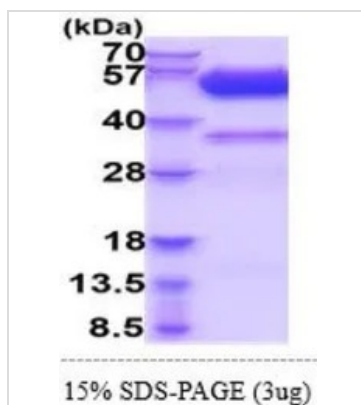
C-terminal hlgG-His-Tag; Length: 395 a.a. Sequence: ATIPRQDEVP QQTVAQQQR RSLKEEECPA GSHRSEYGA CNPCTEGVDY TIASNNLPSC LLCTVCKSGQ TNKSSCTTTR DTVCQCEKGS FQDKNSPEMC RTCRTGCPRG MVKVSNCTPR SDIKCKNESA ASSTGKTPAA EETVTILGM LASPYHVEPK SCDKTHTCPP CPAPELLGGP SVFLFPPKPK DTLNISRTPE VTCVVVDVSH EDPEVKFNWY VDGVEVHNAK TKPREEQYNS TYRWSVLTV LHQDWLNGKE YKCKVSNKAL PAPIEKTISK AKGQPREPQV YTLPPSRDEL TKNQVSLTCL VKGFYPSDIA VEWESNGQPE NNYKTPPV L DSDGSFFLYS KLTVDKSRWQ QGNVFSCSVM HEALHNHYTQ KSLSLSPGKH HHHHH

**Expression System** Baculovirus**Purity** > 90% by SDS-PAGE.**Endotoxin** < 1.0 EU/µg (determined by LAL method)**Conjugation** Unconjugated**Note** For In vitro laboratory use only. Not for any clinical, therapeutic, or diagnostic use in humans or animals. Not for animal or human consumption.

For full product information, images and publications, please visit our [website](https://www.genetex.com).

Date 2026 / 01 / 29 Page 1 of 2

## DATA IMAGES



### GTX66967-pro Image

3  $\mu$ g of GTX66967-pro Human DcR2 / CD264 protein (active) by SDS-PAGE under reducing condition and visualized by coomassie blue stain



For full product information, images and publications, please visit our [website](#).