

Human DCXR protein, His tag (active)

Cat. No. GTX66968-pro

Applications Functional Assay

Species Human

Package

20 µg

Applications

Application Note

Specific activity is > 1800 pmol/min/µg and is defined as the amount of enzyme that oxidize 1pmole of xylitol to L-xylulose per minute at pH 10.0 at 37°C.

Properties

Form Liquid

Buffer 20mM Tris-HCl, 50mM NaCl, 20% Glycerol, 1mM DTT

Preservative No preservatives

Storage Store as concentrated solution. Centrifuge briefly prior to opening vial. For short-term storage (1-2 weeks), store at 4°C. For long-term storage, aliquot and store at -20°C or below. Avoid multiple freeze-thaw cycles.

Concentration 0.5 mg/ml (Please refer to the vial label for the specific concentration.)

Region/Sequence Full length protein, N-terminal His-Tag; Length: 264 a.a. Sequence: MGSSHHHHHH SSGLVPRGSH MELFLAGRRV LVTGAGKGIG RGTVQALHAT GARVVAVSRT QADLDSLVR CPGIEPVCVD LGDWEATERA LGSVGPVDLL VNNAAVALLQ PFLEVTKEAF DRSFEVNLRA VIQVSQIVAR GLIARGVPGA IVNVSSQCSQ RAVTNHSVYC STKGALDMLT KVMALGLPH KIRVNAVNP VMTSMGQAT WSDPHKAKTM LNRPLGKFA EVEHVVNAIL FLLSDRSGMT TGSTLPVEGG FWAC

Expression System E. coli

Purity > 95% by SDS-PAGE.

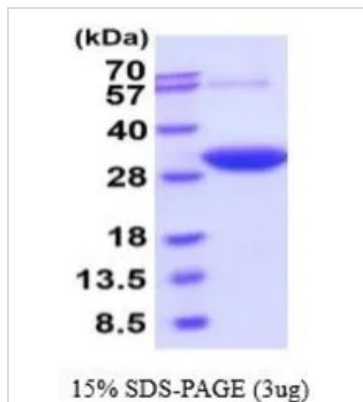
Conjugation Unconjugated

Note For In vitro laboratory use only. Not for any clinical, therapeutic, or diagnostic use in humans or animals. Not for animal or human consumption.



For full product information, images and publications, please visit our [website](#).

DATA IMAGES



GTX66968-pro Image

3 μ g of GTX66968-pro Human DCXR protein (active) by SDS-PAGE under reducing condition and visualized by coomassie blue stain



For full product information, images and publications, please visit our [website](#).