

# Human ERp57 protein, His tag (active)

**Cat. No. GTX66985-pro**

<b>Applications</b>	Functional Assay
<b>Species</b>	Human

**Package**  
20 µg

## Applications

### Application Note

Specific activity > 20 A650/cm/min/mg. Enzymatic activity was confirmed by measuring the aggregation of insulin in the presence of DTT.

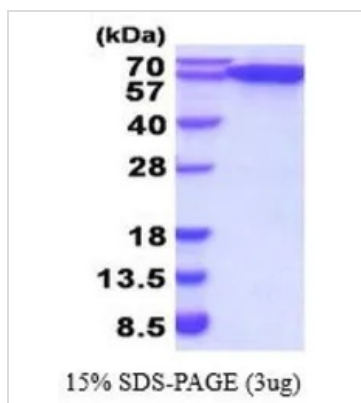
## Properties

<b>Form</b>	Liquid
<b>Buffer</b>	20mM Tris-HCl, 100mM NaCl, 10% Glycerol, 1mM DTT
<b>Preservative</b>	No preservatives
<b>Storage</b>	Store as concentrated solution. Centrifuge briefly prior to opening vial. For short-term storage (1-2 weeks), store at 4°C. For long-term storage, aliquot and store at -20°C or below. Avoid multiple freeze-thaw cycles.
<b>Concentration</b>	1 mg/ml (Please refer to the vial label for the specific concentration.)
<b>Region/Sequence</b>	N-terminal His-Tag; Length: 518 a.a. Sequence: MRGSHHHHHH GMASMTGGQQ MGRDLYDDDD KDRWGMSMSDV LELTDDNFES RISDTGSAGL MLVEFFAPWC GHCKRLAPEY EAAATRLKGI VPLAKVDCTA NTNTCNKYGV SGYPTLKIFR DGEEAGAYDG PRTADGIVSH LKKQAGPASV PLRTEEFK FISKDASIV GFFDDSFSEA HSEFLKAASN LRDNYRFAHT NVESLVNEYD DNGEGILFR PSHLTNKFED KTVAYTEQKM TSGKIKKFIQ ENIFGICPHM TEDNKDLIQG KDLLIAYYDV DYEKNAKGSN YWRNRVMMVA KKFLDAGHKL NFAVASRKT SHLSDFGLE STAGEIPVVA IRTAKGEKFV MQEEFSRDGK ALERFLQDYF DGNLKRYLKS EPIESNDGP VKVVAENFD EIVNNENKDV LIEFYAPWCG HCKNLEPKYK ELGEKLSKDP NIVAKMDAT ANDVPSPYEV RGFPTIYFSP ANKKLNPKKY EGGRELSDFI SYLQREATNP PVIQEEKPKK KKAQEDL
<b>Expression System</b>	E. coli
<b>Purity</b>	> 95% by SDS-PAGE.
<b>Conjugation</b>	Unconjugated
<b>Note</b>	For In vitro laboratory use only. Not for any clinical, therapeutic, or diagnostic use in humans or animals. Not for animal or human consumption.



For full product information, images and publications, please visit our [website](https://www.genetex.com).

## DATA IMAGES



### GTX66985-pro Image

3 µg of GTX66985-pro Human ERp57 protein (active) by SDS-PAGE under reducing condition and visualized by coomassie blue stain



For full product information, images and publications, please visit our [website](#).