

Mouse ERp57 protein, His tag (active)

Cat. No. GTX66986-pro

Applications Functional Assay**Species** Mouse**Package**

10 µg

Applications

Application Note

Specific activity is > 15 A650/cm/min/mg, obtained by measuring the increase of insulin precipitation in absorbance at 650 nm resulting from the reduction of insulin.

Properties

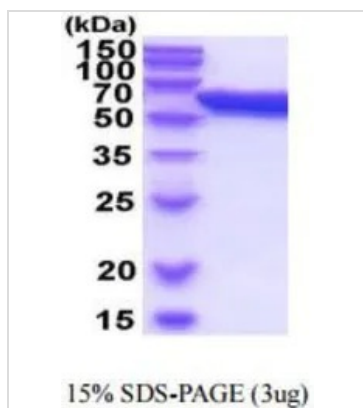
Form Liquid**Buffer** 20mM Tris-HCl, 100mM NaCl, 10% Glycerol, 1mM DTT**Preservative** No preservatives**Storage** Store as concentrated solution. Centrifuge briefly prior to opening vial. For short-term storage (1-2 weeks), store at 4°C. For long-term storage, aliquot and store at -20°C or below. Avoid multiple freeze-thaw cycles.**Concentration** 1 mg/ml (Please refer to the vial label for the specific concentration.)**Region/Sequence**

N-terminal His-Tag; Length: 505 a.a. Sequence: MGSSHHHHHH SSGLVPRGSH MGSMSDVLEL TDENFESRVS DTGSAGLMLV
EFFAPWCGHC KRLAPEYEA ATRLKGIVPL AKVDCTANTN TCNKYGVSGY PTLKIFRDGE EAGAYDGPRT ADGIVSHLKK
QAGPASVPLR TEEFKKFIS DKDASVVGFF RDLFSDGHSE FLKAASNLRD NYRFAHTNIE SLVKEYDDNG EGITIFRPLH
LANKFEDKTV AYTEKKMTSG KIKKFIQDSI FGLCPHMTED NKDLIQGKDL LTAYYVDYDYE KNAKGSNYWR NRVMVMVAKKF
LDAGHKLNFA VASRKTF SHE LSDFGLESTT GEVPVVAIRT AKGEKFVMQE EFSRDGKALE QFLQEYFDGN LKRYLKSEPI
PESNEGPVKV VVAENFDDIV NEEDKDLIE FYAPWCGHCK NLEPKYKELG EKLSKDPNIV IAKMDATAND VSPSYEVKGF
PTIYFSPANK KLTPKKYEGG RELNDFISYL QREATNPPII QEEKPKKKKK AQEDL

Expression System E. coli**Purity** > 95% by SDS-PAGE.**Conjugation** Unconjugated**Note** For In vitro laboratory use only. Not for any clinical, therapeutic, or diagnostic use in humans or animals. Not for animal or human consumption.

For full product information, images and publications, please visit our [website](#).

DATA IMAGES



GTX66986-pro Image

3 μ g of GTX66986-pro Mouse ERp57 protein (active) by SDS-PAGE under reducing condition and visualized by coomassie blue stain



For full product information, images and publications, please visit our [website](https://www.genetex.com).