

Human FKBP2 protein (active)

Cat. No. GTX66993-pro

| | |
|---------------------|------------------|
| Applications | Functional Assay |
| Species | Human |

Package
50 µg

Applications

Application Note

Specific activity is > 700 nmol/min/mg, and is defined as the amount of enzyme that cleaves 1nmol of suc-AAFP-PNA per minute at 37°C in Tris-HCl (pH 8.0) using chymotrypsin.

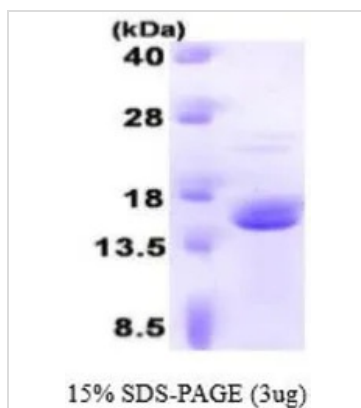
Properties

| | |
|--------------------------|--|
| Form | Liquid |
| Buffer | 20mM Tris-HCl, 10% Glycerol, 1mM DTT |
| Preservative | No preservatives |
| Storage | Store as concentrated solution. Centrifuge briefly prior to opening vial. For short-term storage (1-2 weeks), store at 4°C. For long-term storage, aliquot and store at -20°C or below. Avoid multiple freeze-thaw cycles. |
| Concentration | 1 mg/ml (Please refer to the vial label for the specific concentration.) |
| Region/Sequence | Length: 122 a.a. Sequence: MATGAEGKRK LQIGVKKRVD HCPIKSRKGD VLHMHYTGKL EDGTEFDSSL PQNQPFVFSL GTGQVIKQWD QGLGMCEGE KRKLVIPSEL GYGERGAPPK IPGGATLVFE VELLKIERT EL |
| Expression System | E. coli |
| Purity | > 90% by SDS-PAGE. |
| Endotoxin | < 1.0 EU/µg (determined by LAL method) |
| Conjugation | Unconjugated |
| Note | For In vitro laboratory use only. Not for any clinical, therapeutic, or diagnostic use in humans or animals. Not for animal or human consumption. |



For full product information, images and publications, please visit our [website](#).

DATA IMAGES



GTX66993-pro Image

3 μ g of GTX66993-pro Human FKBP2 protein (active) by SDS-PAGE under reducing condition and visualized by coomassie blue stain



For full product information, images and publications, please visit our [website](#).