

## Mouse Galectin 8 protein, His tag (active)

Cat. No. GTX67004-pro

**Applications** Functional Assay**Species** Mouse**Package**

50 µg

## Applications

## Application Note

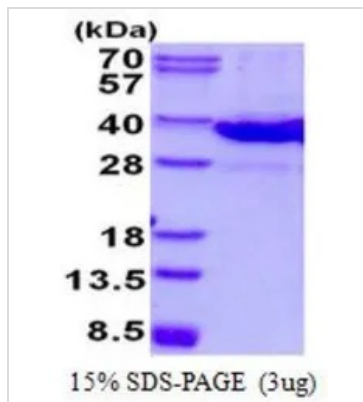
The ED<sub>50</sub> for this effect is equal to or less than 2 µg/ml. Measured by its ability to agglutinate human red blood cells.

## Properties

**Form** Liquid**Buffer** 20mM Tris-HCl, 150mM NaCl, 20% Glycerol, 1mM DTT**Preservative** No preservatives**Storage** Store as concentrated solution. Centrifuge briefly prior to opening vial. For short-term storage (1-2 weeks), store at 4°C. For long-term storage, aliquot and store at -20°C or below. Avoid multiple freeze-thaw cycles.**Concentration** 0.5 mg/ml (Please refer to the vial label for the specific concentration.)**Region/Sequence** Full length protein, N-terminal His-Tag; Length: 339 a.a. Sequence: MGSSHHHHHH SSGLVPRGSH MGSMLSLNNL QNIINYNIIP YVGITEQLK PGSLIVIRGH VPKDSERFQV DFQLGNSLKP RADVAFHNP RFKRSSCIVC NTLTQEKWGW EEITYDMPFR KEKSFEIVFM VLKNKFQVAV NGRHVLLYAH RISPEQIDTV GIYGKVNIIHS IGFRFSSDLQ SMETSALGLT QINRENIQKP GKQLQLSLPFE ARLNASMGPG RTVVIKGEVN TNARSFNVDL VAGKTRDIAL HLNPRNLNKA FVRNSFLQDA WGEEERNITC FPFSSGMYFE MIIYCDVREF KVAINGVHSL EYKHRFKDLS SIDTSLVDGD IRLDVRSW**Expression System** E. coli**Purity** > 90% by SDS-PAGE.**Conjugation** Unconjugated**Note** For In vitro laboratory use only. Not for any clinical, therapeutic, or diagnostic use in humans or animals. Not for animal or human consumption.

For full product information, images and publications, please visit our [website](#).

## DATA IMAGES



### GTX67004-pro Image

3  $\mu$ g of GTX67004-pro Mouse Galectin 8 protein (active) by SDS-PAGE under reducing condition and visualized by coomassie blue stain



For full product information, images and publications, please visit our [website](#).