

Mouse Galectin4 protein, His tag (active)

Cat. No. GTX67007-pro

Applications Functional Assay**Species** Mouse**Package**

50 µg

Applications

Application Note

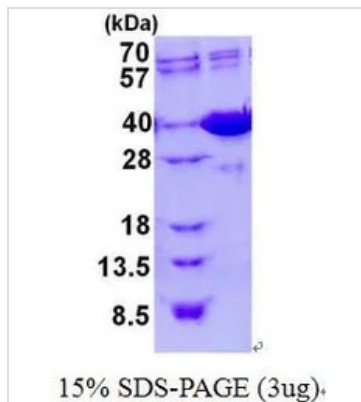
The ED₅₀ for this effect is equal to or less than 5 µg/ml. Measured by its ability to agglutinate human red blood cells.

Properties

Form Liquid**Buffer** 20mM Tris-HCl, 100mM NaCl, 10% Glycerol, 1mM DTT**Preservative** No preservatives**Storage** Store as concentrated solution. Centrifuge briefly prior to opening vial. For short-term storage (1-2 weeks), store at 4°C. For long-term storage, aliquot and store at -20°C or below. Avoid multiple freeze-thaw cycles.**Concentration** 0.5 mg/ml (Please refer to the vial label for the specific concentration.)**Region/Sequence** Full length protein, N-terminal His-Tag; Length: 349 a.a. Sequence: MGSSHHHHHH SSGLVPRGSH MGSMAYVPAP GYQPTYNPTL PYKRPIPGGL SVGMSVYIQG MAKENMRRFH VNFAVGQDDG ADVAFHFNP FDGWDKVVFN TMQSGQWGKE EKKKSMPFQK GKHFELVFMV MPEHYKVVVN GNSFYEGHR LPVQMVTHLQ VDGDLQLSI NFLGGQPAAA PYPGAMTIPA YPAGSPGYNP PQMNTLPVMT GPPVFNPVYP YVGALQGGLT VRRTIIKGY VLPTARNFVI NFKVGSSGDI ALHLNPRIGD SVVRNSFMNG SWGAEERKVA YNPFPGPQFF DLSIRCGMDR FKVFANGQHL FDFSHRFQAF QMVDLTLEING DITLSYVQI**Expression System** E. coli**Purity** > 90% by SDS-PAGE.**Conjugation** Unconjugated**Note** For In vitro laboratory use only. Not for any clinical, therapeutic, or diagnostic use in humans or animals. Not for animal or human consumption.

For full product information, images and publications, please visit our [website](#).

DATA IMAGES



GTX67007-pro Image

3 μ g of GTX67007-pro Mouse Galectin4 protein (active) by SDS-PAGE under reducing condition and visualized by coomassie blue stain



For full product information, images and publications, please visit our [website](#).