

Human GAPDH protein (active)

Cat. No. GTX67008-pro

| | |
|---------------------|------------------|
| Applications | Functional Assay |
| Species | Human |

Package
20 µg

Applications

Application Note

Specific activity is > 90 units/mg, and is defined as the amount of enzyme that convert 1.0 µmole of glyceraldehyde-3-phosphate to 1,3-Bisphosphoglycerate per minute at pH 8.5 at 37°C.

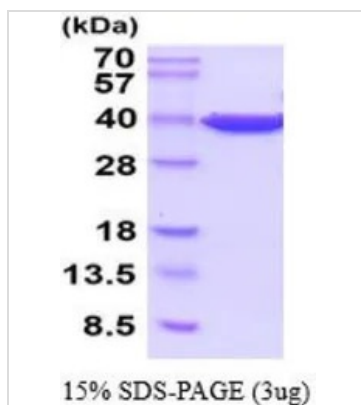
Properties

| | |
|--------------------------|--|
| Form | Liquid |
| Buffer | 20mM Tris-HCl, 20% Glycerol, 1mM DTT, 1mM EDTA |
| Preservative | No preservatives |
| Storage | Store as concentrated solution. Centrifuge briefly prior to opening vial. For short-term storage (1-2 weeks), store at 4°C. For long-term storage, aliquot and store at -20°C or below. Avoid multiple freeze-thaw cycles. |
| Concentration | 1 mg/ml (Please refer to the vial label for the specific concentration.) |
| Region/Sequence | Full length protein, Length: 335 a.a. Sequence: MGKVKGVNG FGRIGRLVTR AAFNSGKVDI VAINDPFIDL NYMVYMFQYD STHGKFHGTV KAENGKLVIN GNPITIFQER DPSKIKWGDA GAEEVVESTG VFTTMEKAGA HLQGGAKRVI ISAPSADAPM FVMGVNHEKY DNSLKISNA SCTTNCLAPL AKVIHDNFGI VEGLMTTVHA ITATQKTVDG PSGKLWRDGR GALQNIIPAS TGAAKAVGKV IPELNGKLTG MAFRVPTANV SVDLTCRLE KPAKYDDIKK VKQASEGPL KGILGYTEHQ VVSSDFNSDT HSSTFDAGAG IALNDHFVKL ISWYDNEFGY SNRVVDLMAH MASKE |
| Expression System | E. coli |
| Purity | > 95% by SDS-PAGE. |
| Conjugation | Unconjugated |
| Note | For In vitro laboratory use only. Not for any clinical, therapeutic, or diagnostic use in humans or animals. Not for animal or human consumption. |



For full product information, images and publications, please visit our [website](#).

DATA IMAGES



GTX67008-pro Image

3 μ g of GTX67008-pro Human GAPDH protein (active) by SDS-PAGE under reducing condition and visualized by coomassie blue stain



For full product information, images and publications, please visit our [website](https://www.genetex.com).