

Mouse GAPDH protein, His tag (active)

Cat. No. GTX67009-pro

Applications Functional Assay

Species Mouse

Package

20 µg

Applications

Application Note

Specific activity is > 40 units/mg, and is defined as the amount of enzyme that convert 1.0 µmole of glyceraldehyde-3-phosphate to 1,3-Bisphosphoglycerate per minute at pH 8.5 at 37°C.

Properties

Form Liquid

Buffer PBS, 20% Glycerol, 1mM DTT

Preservative No preservatives

Storage Store as concentrated solution. Centrifuge briefly prior to opening vial. For short-term storage (1-2 weeks), store at 4°C. For long-term storage, aliquot and store at -20°C or below. Avoid multiple freeze-thaw cycles.

Concentration 0.25 mg/ml (Please refer to the vial label for the specific concentration.)

Region/Sequence Full length protein, N-terminal His-Tag; Length: 356 a.a. Sequence: MGSSHHHHHH SSGLVPRGSH MGSMVKVGVN GFGRIQLVT RAAICSGKVE IVAINDPFID LNYMVMFYQY DSTHGKFNGT VKAENGKLV NGKPITIFQE RDPTNIKWGE AGAEYVVEST GVFTTMEKAG AHLKGGAKRV IISAPSADAP MFVMGVNHEK YDNSLKIVSN ASCTTNCLAP LAKVIHDNFG IVEGLMTTVH AITATQKTVD GPSGKLWRDG RGAAQNIIPA STGAAKAVGK VIPELNGKLT GMAFRVPTPN VSVVDLTCLRL EKPAKYDDIK KVKQASEGP LKGILGYTED QVSCDFNSN SHSSTFDAGA GIALNDNFVK LISWYDNEYG YSNRVVDLMA YMASKE

Expression System E. coli

Purity > 95% by SDS-PAGE.

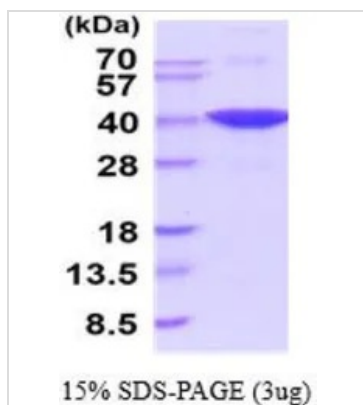
Conjugation Unconjugated

Note For In vitro laboratory use only. Not for any clinical, therapeutic, or diagnostic use in humans or animals. Not for animal or human consumption.



For full product information, images and publications, please visit our [website](https://www.genetex.com).

DATA IMAGES



GTX67009-pro Image

3 μ g of GTX67009-pro Mouse GAPDH protein (active) by SDS-PAGE under reducing condition and visualized by coomassie blue stain



For full product information, images and publications, please visit our [website](https://www.genetex.com).