

Human G-CSF protein (active)

Cat. No. GTX67010-pro

Applications	Functional Assay
Species	Human

Package
50 µg

Applications

Application Note

Measured in a cell proliferation assay using M-NFS-60 mouse myelogenous leukemia lymphoblast cells. The ED₅₀ for this effect is less than or equal to 0.3 ng/ml.

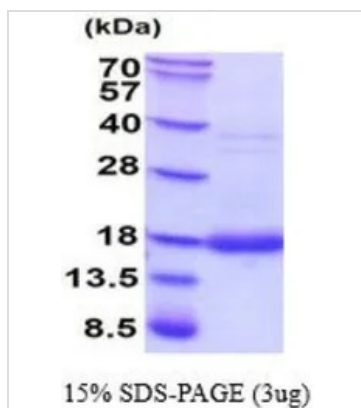
Properties

Form	Liquid
Buffer	PBS, 10% Glycerol
Preservative	No preservatives
Storage	Store as concentrated solution. Centrifuge briefly prior to opening vial. For short-term storage (1-2 weeks), store at 4°C. For long-term storage, aliquot and store at -20°C or below. Avoid multiple freeze-thaw cycles.
Concentration	0.5 mg/ml (Please refer to the vial label for the specific concentration.)
Region/Sequence	Length: 175 a.a. Sequence: MTPLGPASSL PQSFLKCLE QVRKIQGDGA ALQEKLCATY KLCHPEELVL LGHSLGIPWA PLSSCPSQAL QLAGCLSQLH SGLFLYQGLL QALEGISPEL GPTLDTLQLD VADFATTIWQ QMEELGMAPA LQPTQGAMPA FASAFQRRAG GVLVASHLQS FLEVSRYRLR HLAQP
Expression System	E. coli
Purification	purified by FPLC gel-filtration chromatography, after refolding of the isolated inclusion bodies in a renaturation buffer.
Purity	> 95% by SDS-PAGE.
Endotoxin	< 1.0 EU/µg (determined by LAL method)
Conjugation	Unconjugated
Note	For In vitro laboratory use only. Not for any clinical, therapeutic, or diagnostic use in humans or animals. Not for animal or human consumption.



For full product information, images and publications, please visit our [website](#).

DATA IMAGES



GTX67010-pro Image

3 μ g of GTX67010-pro Human G-CSF protein (active) by SDS-PAGE under reducing condition and visualized by coomassie blue stain



For full product information, images and publications, please visit our [website](#).