

## Mouse Glyoxalase I protein, His tag (active)

Cat. No. GTX67015-pro

**Applications** Functional Assay**Species** Mouse**Package**

10 µg

## Applications

## Application Note

Specific activity is > 210 units/mg, and is defined as the amount of enzyme that will form 1.0 µmole of S-lactoylglutathione from methylglyoxal and reduced glutathione per minute at pH 6.5 at 25°C.

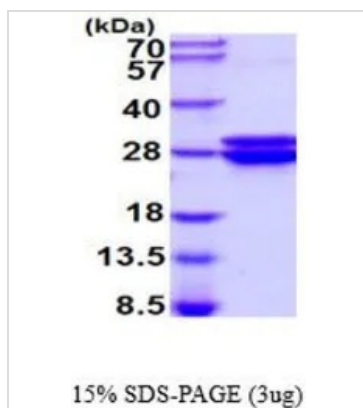
**Observed MW (kDa)** 28-40 kDa.

## Properties

**Form** Liquid**Buffer** PBS, 10% Glycerol**Preservative** No preservatives**Storage** Store as concentrated solution. Centrifuge briefly prior to opening vial. For short-term storage (1-2 weeks), store at 4°C. For long-term storage, aliquot and store at -20°C or below. Avoid multiple freeze-thaw cycles.**Concentration** 0.5 mg/ml (Please refer to the vial label for the specific concentration.)**Region/Sequence** Full length protein, C-terminal His-Tag; Length: 192 a.a. Sequence: MAEPQPASSG LTDETAFFSCC SDPDPSTKDF LLQQTMLRIK DPKKSLDFYT RVLGLTLLQK LDFPAMKFSL YFLAYEDKND IPKDKSEKTA WTFSRKATLE LTHNWTGTEDD ETQSYHNGNS DPRGFGHIGI AVPDVYSACK RFEELGVKFV KKPDDGKMKG LAFIQDPDGY WIEILNPNKI ATIIEHHHH HH**Expression System** Baculovirus**Purity** > 95% by SDS-PAGE.**Endotoxin** < 1.0 EU/µg (determined by LAL method)**Conjugation** Unconjugated**Note** For In vitro laboratory use only. Not for any clinical, therapeutic, or diagnostic use in humans or animals. Not for animal or human consumption.

For full product information, images and publications, please visit our [website](#).

## DATA IMAGES



### GTX67015-pro Image

3  $\mu$ g of GTX67015-pro Mouse Glyoxalase I protein (active) by SDS-PAGE under reducing condition and visualized by coomassie blue stain



For full product information, images and publications, please visit our [website](#).