

Human GM-CSF protein (active)

Cat. No. GTX67016-pro

Applications	Functional Assay
Species	Human

Package
100 µg

Applications

Application Note

Measured in a cell proliferation assay using TF-1 human erythroleukemic cells. The ED₅₀ for this effect is less or equal to 50 pg/ml.

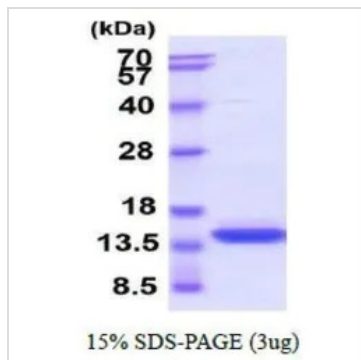
Properties

Form	Liquid
Buffer	PBS
Preservative	No preservatives
Storage	Store as concentrated solution. Centrifuge briefly prior to opening vial. For short-term storage (1-2 weeks), store at 4°C. For long-term storage, aliquot and store at -20°C or below. Avoid multiple freeze-thaw cycles.
Concentration	1 mg/ml (Please refer to the vial label for the specific concentration.)
Region/Sequence	Length: 128 a.a. Sequence: MAPARSPSPS TQPWEHVNAI QEARRLLNLS RDTAAEMNET VEIVSEMF DL QEPTCLQTRL ELYKQGLRGS LTKLKGPLTM MASHYKQHCP PTPETSCATQ IITFESFKEN LKDFLLVIPF DCWEPVQE
Expression System	E. coli
Purity	> 95% by SDS-PAGE.
Endotoxin	< 1.0 EU/µg (determined by LAL method)
Conjugation	Unconjugated
Note	For In vitro laboratory use only. Not for any clinical, therapeutic, or diagnostic use in humans or animals. Not for animal or human consumption.



For full product information, images and publications, please visit our [website](#).

DATA IMAGES



GTX67016-pro Image

3 μ g of GTX67016-pro Human GM-CSF protein (active) by SDS-PAGE under reducing condition and visualized by coomassie blue stain



For full product information, images and publications, please visit our [website](#).