

## Mouse GOT1 protein, His tag (active)

Cat. No. GTX67021-pro

**Applications** Functional Assay**Species** Mouse**Package**

100 µg

## Applications

## Application Note

Specific activity is > 80 units/mg, and is defined as the amount of enzyme that converts 1.0 µmolee of alpha-ketoglutarate to L-Glutamate per minute at pH 8.0 at 25°C.

## Properties

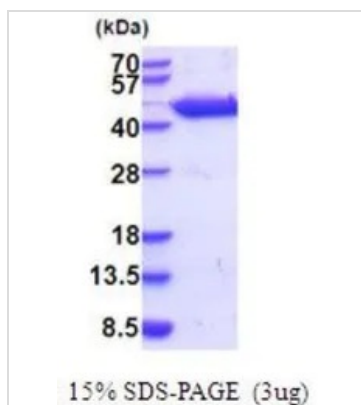
**Form** Liquid**Buffer** PBS, 10% Glycerol, 1mM DTT**Preservative** No preservatives**Storage** Store as concentrated solution. Centrifuge briefly prior to opening vial. For short-term storage (1-2 weeks), store at 4°C. For long-term storage, aliquot and store at -20°C or below. Avoid multiple freeze-thaw cycles.**Concentration** 0.5 mg/ml (Please refer to the vial label for the specific concentration.)**Region/Sequence**

Full length protein, N-terminal His-Tag; Length: 436 a.a. Sequence: MGSSHHHHHH SSGLVPRGSH MGSMAPPSVF AQVPQAPPVL VFKLTADEFD DPDPKRVNLG VGAYRTDESQ PWVLPVVRKV EQKIANDNSL NHEYLPILGL AEFSCASRL VLGDNPAIR ENRVGGVQSL GGTGALRIGA DFLGRWYNGT DNKNTPIYVS SPTWENHNAV FSAAGFKDIR PYCYWDAEKR GLDLQGFLND LENAPEFSIF VLHACAHNPT GTDPTPEQWK QIAAVMQRRF LPPFFDSAYQ GFASGDLEKD AWAIYFVSE GFELFCAQSF SKNFGLYNER VGNLTVVGKE SDSVLRVLSQ MEKIVRITWS NPPAQGARIV AATLSDPELF KEWKGNVKT M ADRI LTM RSE LRARLEAKT PGTWWHITEQ IGMFSFTGLN PKQVEYLVNE KHIYLLPSGR INMCGLTTKN LDYVATSIHE AVTKIQ

**Expression System** E. coli**Purity** > 95% by SDS-PAGE.**Conjugation** Unconjugated**Note** For In vitro laboratory use only. Not for any clinical, therapeutic, or diagnostic use in humans or animals. Not for animal or human consumption.

For full product information, images and publications, please visit our [website](#).

## DATA IMAGES



### GTX67021-pro Image

3  $\mu$ g of GTX67021-pro Mouse GOT1 protein (active) by SDS-PAGE under reducing condition and visualized by coomassie blue stain



For full product information, images and publications, please visit our [website](#).