

Rat GPT protein, His tag (active)

Cat. No. GTX67026-pro

Applications Functional Assay**Species** Rat**Package**

100 µg

Applications

Application Note

Specific activity is > 60 units/mg, and is defined as the amount of enzyme that cleaves 1.0 µmole of L-Alanine to L-Glutamate per minute at pH 7.5 at 37°C.

Properties

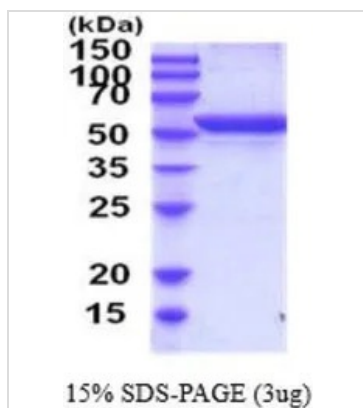
Form Liquid**Buffer** PBS, 10% Glycerol**Preservative** No preservatives**Storage** Store as concentrated solution. Centrifuge briefly prior to opening vial. For short-term storage (1-2 weeks), store at 4°C. For long-term storage, aliquot and store at -20°C or below. Avoid multiple freeze-thaw cycles.**Concentration** 1 mg/ml (Please refer to the vial label for the specific concentration.)**Region/Sequence**

Full length protein, N-terminal His-Tag; Length: 519 a.a. Sequence: MGSSHHHHHH SSGLVPRGSH MGSMASRVND QSQASRNLK GKVLTLDTMN PCVRRVEYAV RGPVQRALE LEQELRQGVK KPFTEVIRAN IGDAQAMGQR PITFFRQVLA LCVYPNLLSS PDFPEDAKRR AERILQACGG HSLGAYSISS GIQPIREDVA QYIERRDGGI PADPNNIFLS TGASDAIVTM LKLLVSGEGR ARTGVLPIIP QYPLYSALA ELDAVQVDYY LDEERAWALD IAE LRALCQ ARDRCCPRVL CVINPGNPTG QVQTRECIEA VIRFAFKEGL FLMADEVYQD NVYAEGSQFH SFKKVLMEMG PPYSTQQELA SFHSVSKGYM GECGFRGGYV EVVNMDAEVQ KQMGKLMSVR LCPPVPGQAL MDMVVSPTP SEPSFKQFQA ERQEVLAELA AKAKLTEQVF NEAPGIRCNP VQGAMYSFPQ VQLPLKAVQR AQELGLAPDM FFCLCILEET GICVPGSGF GQQEGTYHFR MTILPPMEKL RLLLEKLSHF HAKFTHEYS

Expression System E. coli**Purity** > 90% by SDS-PAGE.**Conjugation** Unconjugated**Note** For In vitro laboratory use only. Not for any clinical, therapeutic, or diagnostic use in humans or animals. Not for animal or human consumption.

For full product information, images and publications, please visit our [website](#).

DATA IMAGES



GTX67026-pro Image

3 μ g of GTX67026-pro Rat GPT protein (active) by SDS-PAGE under reducing condition and visualized by coomassie blue stain



For full product information, images and publications, please visit our [website](#).