

Human Granzyme B protein, His tag (active)

Cat. No. GTX67028-pro

Applications Functional Assay**Species** Human**Package**

5 µg

Applications

Application Note

Specific activity is 2500 pmol/min/µg, and is defined as the amount of enzyme that cleave 1pmole of Boc-Ala-Ala-Asp-SBzl at 37°C.

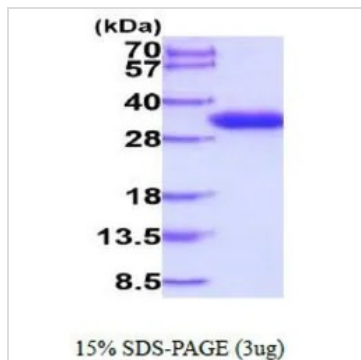
Observed MW (kDa) 28-40 kDa.

Properties

Form Liquid**Buffer** PBS, 20% Glycerol, 1mM DTT**Preservative** No preservatives**Storage** Store as concentrated solution. Centrifuge briefly prior to opening vial. For short-term storage (1-2 weeks), store at 4°C. For long-term storage, aliquot and store at -20°C or below. Avoid multiple freeze-thaw cycles.**Concentration** 0.5 mg/ml (Please refer to the vial label for the specific concentration.)**Region/Sequence** C-terminal His-Tag; Length: 235 a.a. Sequence: GEIIGGHEAK PHSRPYMayL MIWDQKSLKR CGGFLIRDDF VLTAHCWGS SINVTLGAHN IKEQEPTQQF IPVKRPIPHP AYNPKNFSND IMLQLERKA KRTRAVQPLR LPSNKAQVKP GQTCSVAGWG QTAPLGKHS TLQEVKMTVQ EDRKCESDLR HYDSTIELC VGDPEIKKTS FKGDSSGGLV CNKVAQGIVS YGRNNGMPPR ACTKVSSFVH WIKKTMKRYH HHHHH**Expression System** Baculovirus**Purity** > 95% by SDS-PAGE.**Endotoxin** < 1.0 EU/µg (determined by LAL method)**Conjugation** Unconjugated**Note** For In vitro laboratory use only. Not for any clinical, therapeutic, or diagnostic use in humans or animals. Not for animal or human consumption.

For full product information, images and publications, please visit our [website](#).

DATA IMAGES



GTX67028-pro Image

3 μ g of GTX67028-pro Human Granzyme B protein (active) by SDS-PAGE under reducing condition and visualized by coomassie blue stain



For full product information, images and publications, please visit our [website](#).