

Human Growth Hormone protein (active)

Cat. No. GTX67029-pro

Applications Functional Assay**Species** Human**Package**

100 µg

Applications

Application Note

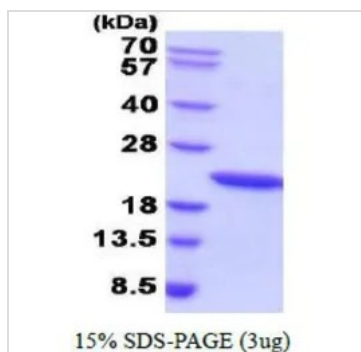
Measured in a cell proliferation assay using Nb2-11 Rat lymphoma cells. The ED₅₀ for this effect is less or equal to 0.2 ng/ml.

Properties

Form Liquid**Buffer** PBS, 88mM Mannitol**Preservative** No preservatives**Storage** Store as concentrated solution. Centrifuge briefly prior to opening vial. For short-term storage (1-2 weeks), store at 4°C. For long-term storage, aliquot and store at -20°C or below. Avoid multiple freeze-thaw cycles.**Concentration** 1 mg/ml (Please refer to the vial label for the specific concentration.)**Region/Sequence** Length: 192 a.a. Sequence: MFPTIPLSRL FDNAMLRAHR LHQLAFDTYQ EFEEAYIPKE QKYSFLQNPQ TSLCFSESIP TPSNREETQQ KSNLELLRIS LLLIQSWLEP VQFLRSVFAN SLVYGASDSN VYDLLKDLEE GIQTLMGRLD DGSPTGQIF KQTYSKFDTN SHND DALLKN YGLLYCFRKD MDKVETFLRI VQCRSVEGSC GF**Expression System** E. coli**Purification** purified by FPLC gel-filtration chromatography, after refolding of the isolated inclusion bodies in a renaturation buffer.**Purity** > 95% by SDS-PAGE.**Endotoxin** < 1.0 EU/µg (determined by LAL method)**Conjugation** Unconjugated**Note** For In vitro laboratory use only. Not for any clinical, therapeutic, or diagnostic use in humans or animals. Not for animal or human consumption.

For full product information, images and publications, please visit our [website](#).

DATA IMAGES



GTX67029-pro Image

3 µg of GTX67029-pro Human Growth Hormone protein (active) by SDS-PAGE under reducing condition and visualized by coomassie blue stain



For full product information, images and publications, please visit our [website](https://www.genetex.com).