

Human Growth Hormone protein (active)

Cat. No. GTX67030-pro**Applications** Functional Assay**Species** Human**Package**

100 µg

Applications

Application Note

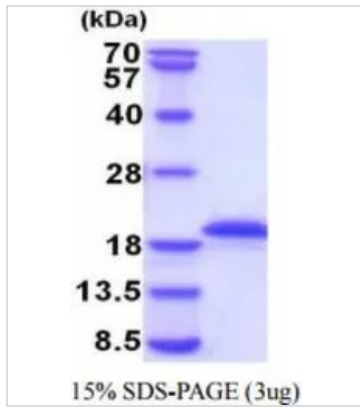
Measured in a cell proliferation assay using Nb2-11 Rat lymphoma cells. The ED₅₀ for this effect is less or equal to 1 ng/ml.

Properties

Form Liquid**Buffer** PBS, 10% Glycerol**Preservative** No preservatives**Storage** Store as concentrated solution. Centrifuge briefly prior to opening vial. For short-term storage (1-2 weeks), store at 4°C. For long-term storage, aliquot and store at -20°C or below. Avoid multiple freeze-thaw cycles.**Concentration** 1 mg/ml (Please refer to the vial label for the specific concentration.)**Region/Sequence** Length: 177 a.a. Sequence: MFPTIPLSRL FDNAMLRAHR LHQLAFDTYQ EFNPTQSLCF SESIPTSNR EETQQKSNLE LLRISLLLIQ SWLEPVQFLR SVFANSLVYG ASDSNVYDLL KDLEEGIQL MGRLEDGSPR TGQIFKQTY S KFDNTNSHNDD ALLKNYGLLY CFRKDMDKVE TFLRIVQCRS VEGSCGF**Expression System** E. coli**Purification** purified by FPLC gel-filtration chromatography, after refolding of the isolated inclusion bodies in a renaturation buffer.**Purity** > 95% by SDS-PAGE.**Endotoxin** < 1.0 EU/µg (determined by LAL method)**Conjugation** Unconjugated**Note** For In vitro laboratory use only. Not for any clinical, therapeutic, or diagnostic use in humans or animals. Not for animal or human consumption.

For full product information, images and publications, please visit our [website](#).

DATA IMAGES

**GTX67030-pro Image**

3 μ g of GTX67030-pro Human Growth Hormone protein (active) by SDS-PAGE under reducing condition and visualized by coomassie blue stain



For full product information, images and publications, please visit our [website](#).