

## Human Growth hormone Receptor protein, His tag (active)

Cat. No. GTX67031-pro

**Applications** Functional Assay**Species** Human**Package**

50 µg

## Applications

## Application Note

Measured by ability to inhibit GH-induced proliferation assay using Nb2-11 Rat lymphoma cells in the presence of 1.25 ng/ml of human growth hormone. The ED<sub>50</sub> for this effect is equal to or less than 10 ng/ml.

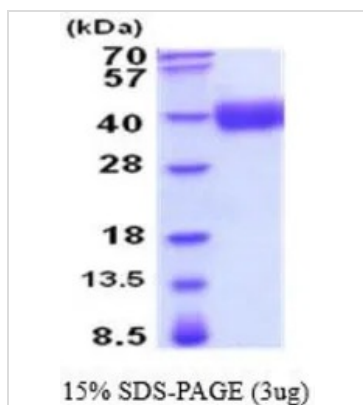
**Observed MW (kDa)** 28-40 kDa.

## Properties

**Form** Liquid**Buffer** PBS, 10% Glycerol**Preservative** No preservatives**Storage** Store as concentrated solution. Centrifuge briefly prior to opening vial. For short-term storage (1-2 weeks), store at 4°C. For long-term storage, aliquot and store at -20°C or below. Avoid multiple freeze-thaw cycles.**Concentration** 1 mg/ml (Please refer to the vial label for the specific concentration.)**Region/Sequence** C-terminal His-Tag; Length: 254 a.a. Sequence: FSGSEATAAI LSRAPWSLQS VNPGLKTNSS KEPKFTKCRS PERETFSCHW TDEVHHGTKN LGPIQLFYTR RNTQEWTEW KECPDYVSAG ENSCYFNSSF TSIWIPYCIK LTSNGGTVDK KCFVDEIVQ PDPPIALNWT LLNVSLTGIH ADIQVRWEAP RNADIQKGMV VLEYELQYKE VNETKWKMMD PILTTSVPVY SLKVDKEYEV RVRSKQRNSG NYGEFSEVLY VTLPMQMSQFT CEEDFYLEHH HHHH**Expression System** Baculovirus**Purity** > 95% by SDS-PAGE.**Endotoxin** < 1.0 EU/µg (determined by LAL method)**Conjugation** Unconjugated**Note** For In vitro laboratory use only. Not for any clinical, therapeutic, or diagnostic use in humans or animals. Not for animal or human consumption.

For full product information, images and publications, please visit our [website](#).

## DATA IMAGES



### GTX67031-pro Image

3  $\mu$ g of GTX67031-pro Human Growth hormone Receptor protein (active) by SDS-PAGE under reducing condition and visualized by coomassie blue stain



For full product information, images and publications, please visit our [website](#).