

## Human GSTA4 protein, His tag (active)

Cat. No. GTX67034-pro

**Applications** Functional Assay**Species** Human**Package**

20 µg

## Applications

## Application Note

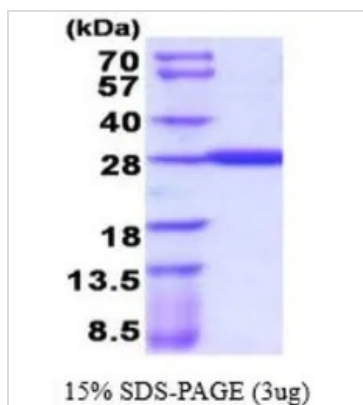
Specific activity is > 4000 pmol/min/µg, and is defined as the amount of enzyme that conjugate 1.0 µmole of 1-chloro-2,4-dinitrobenzene (CDNB) with reduced glutathione per minute at pH 6.5 at 25°C.

## Properties

**Form** Liquid**Buffer** 20mM Tris-HCl, 100mM NaCl, 20% Glycerol, 2mM DTT**Preservative** No preservatives**Storage** Store as concentrated solution. Centrifuge briefly prior to opening vial. For short-term storage (1-2 weeks), store at 4°C. For long-term storage, aliquot and store at -20°C or below. Avoid multiple freeze-thaw cycles.**Concentration** 1 mg/ml (Please refer to the vial label for the specific concentration.)**Region/Sequence** Full length protein, N-terminal His-Tag; Length: 246 a.a. Sequence: MGSSHHHHHH SSGLVPRGSH MGSHEMAARPK LHYPNGRGRM ESVRWVLA AAA GVEFDEEFLE TKEQLYKLQD GNHLLFQQVP MVEIDGMKLV QTRSILHYIA DKHNLF GKNL KERTLIDMYV EGTLDLLELL IMHPFLKPDD QQKEVNNMAQ KAIRYFPVF EKILRGHGQS FLVGNQLSLA DVILLQTLA LEEKIPNLS AFPFLQEYTV KLSNIPTIKR FLEPGSKKKP PPDEIVRTV YNIFRP**Expression System** E. coli**Purity** > 95% by SDS-PAGE.**Conjugation** Unconjugated**Note** For In vitro laboratory use only. Not for any clinical, therapeutic, or diagnostic use in humans or animals. Not for animal or human consumption.

For full product information, images and publications, please visit our [website](#).

## DATA IMAGES



### GTX67034-pro Image

3  $\mu$ g of GTX67034-pro Human GSTA4 protein (active) by SDS-PAGE under reducing condition and visualized by coomassie blue stain



For full product information, images and publications, please visit our [website](https://www.genetex.com).