

# Mouse GSTM1 protein (active)

**Cat. No. GTX67035-pro**
**Applications** Functional Assay

**Species** Mouse

**Package**

100 µg

## Applications

### Application Note

Specific activity is > 40000 pmol/min/µg, and is defined as the amount of enzyme that conjugate 1.0 µmole of 1-chloro-2,4-dinitrobenzene (CDNB) with reduced glutathione per minute at pH 6.5 at 25°C.

## Properties

**Form** Liquid

**Buffer** PBS, 5mM Glutathione

**Preservative** No preservatives

**Storage** Store as concentrated solution. Centrifuge briefly prior to opening vial. For short-term storage (1-2 weeks), store at 4°C. For long-term storage, aliquot and store at -20°C or below. Avoid multiple freeze-thaw cycles.

**Concentration** 1 mg/ml (Please refer to the vial label for the specific concentration.)

**Region/Sequence** Full length protein, Length: 218 a.a. Sequence: MPMILGYWNV RGLTHPIRML LEYTDSSYDE KRYTMGDAPD FDRSQWLNEK FKLGLDFPNL PYLIDGSHKI TQSNAILRYL ARKHHL DGET EEERIRADIV ENQVMDTRMQ LIMLCYNPDF EKQKPEFLKT IPEKMKLYSE FLGKRPWFAG DKVTYVDFLA YDILDQYRMF EPKCLDAFPN LRDFLARFEG LKKISAYMKS SRYIATPIFS KMAHWSNK

**Expression System** E. coli

**Purity** > 95% by SDS-PAGE.

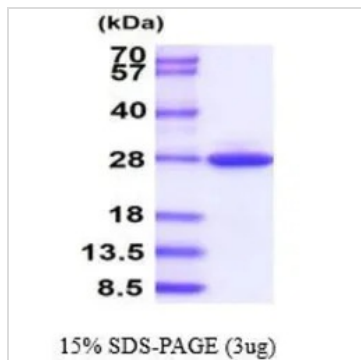
**Endotoxin** < 1.0 EU/µg (determined by LAL method)

**Conjugation** Unconjugated

**Note** For In vitro laboratory use only. Not for any clinical, therapeutic, or diagnostic use in humans or animals. Not for animal or human consumption.


For full product information, images and publications, please visit our [website](#).

## DATA IMAGES



### GTX67035-pro Image

3  $\mu$ g of GTX67035-pro Mouse GSTM1 protein (active) by SDS-PAGE under reducing condition and visualized by coomassie blue stain



For full product information, images and publications, please visit our [website](#).