

Human GSTM2 protein, His tag (active)

Cat. No. GTX67037-pro

Applications Functional Assay

Species Human

Package

100 µg

Applications

Application Note

Specific activity is > 250 units/mg, and is defined as the amount of enzyme that conjugate 1.0 µmole of 1-chloro-2,4-dinitrobenzene (CDNB) with reduced glutathione per minute at pH 6.5 at 25°C.

Properties

Form Liquid

Buffer 20mM Tris-HCl, 100mM NaCl, 10% Glycerol, 1mM DTT

Preservative No preservatives

Storage Store as concentrated solution. Centrifuge briefly prior to opening vial. For short-term storage (1-2 weeks), store at 4°C. For long-term storage, aliquot and store at -20°C or below. Avoid multiple freeze-thaw cycles.

Concentration 0.5 mg/ml (Please refer to the vial label for the specific concentration.)

Region/Sequence Full length protein, N-terminal His-Tag; Length: 238 a.a. Sequence: MGSSHHHHHH SSGLVPRGSH MPMTLGYWNI RGLAHSIRLL LEYTDSSYEE KKYTMGDAPD YDRSQWLNEK FKLGLDFPNL PYLIDGTHKI TQSNAILRYI ARKHNLGCGES EKEQIREIDIL ENQFMDSRMQ LAKLCYDPDF EKLKPEYLQA LPEMLKLYSQ FLGKQPWFLG DKITFVDFIA YDVLERNQVF EPSCLDAFPN LKDFISRFEG LEKISAYMKS SRFLRPVFT KMAVWGNK

Expression System E. coli

Purity > 95% by SDS-PAGE.

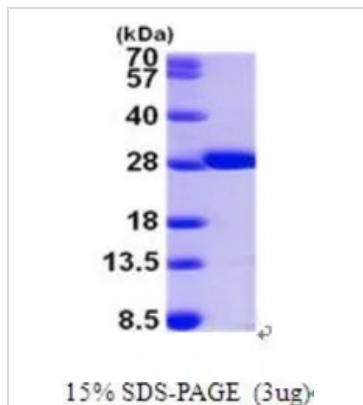
Conjugation Unconjugated

Note For In vitro laboratory use only. Not for any clinical, therapeutic, or diagnostic use in humans or animals. Not for animal or human consumption.



For full product information, images and publications, please visit our [website](https://www.genetex.com).

DATA IMAGES



GTX67037-pro Image

3 μ g of GTX67037-pro Human GSTM2 protein (active) by SDS-PAGE under reducing condition and visualized by coomassie blue stain



For full product information, images and publications, please visit our [website](#).