

Mouse IL2 protein (active)

Cat. No. GTX67061-pro

Applications	Functional Assay
Species	Mouse

Package
50 µg

Applications

Application Note

Measured in a cell proliferation assay using CTLL-2 mouse T lymphocyte. The ED₅₀ for this effect is < 0.9 ng/ml.

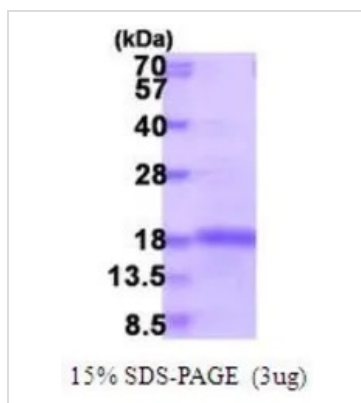
Properties

Form	Liquid
Buffer	PBS, 10% Glycerol
Preservative	No preservatives
Storage	Store as concentrated solution. Centrifuge briefly prior to opening vial. For short-term storage (1-2 weeks), store at 4°C. For long-term storage, aliquot and store at -20°C or below. Avoid multiple freeze-thaw cycles.
Concentration	0.5 mg/ml (Please refer to the vial label for the specific concentration.)
Region/Sequence	Length: 150 a.a. Sequence: MAPTSSSTSS STAEAQQQQQ QQQQQQHLE QLLMDLQELL SRMENYRNLK LPRMLTFKFY LPKQATELKD LQCLEDELGP LRHVLDTQS KSFQLEDAEN FISNIRVTVV KLKGSNTFE CQFDDSATV VDFLRRWIAF SQSIISTSPQ
Expression System	E. coli
Purity	> 90% by SDS-PAGE.
Endotoxin	< 1.0 EU/µg (determined by LAL method)
Conjugation	Unconjugated
Note	For In vitro laboratory use only. Not for any clinical, therapeutic, or diagnostic use in humans or animals. Not for animal or human consumption.



For full product information, images and publications, please visit our [website](#).

DATA IMAGES



GTX67061-pro Image

3 μ g of GTX67061-pro Mouse IL2 protein (active) by SDS-PAGE under reducing condition and visualized by coomassie blue stain



For full product information, images and publications, please visit our [website](#).