

# Mouse IL33 protein, His tag (active)

**Cat. No. GTX67065-pro**

**Applications** Functional Assay

**Species** Mouse

**Package**

50 µg

## Applications

### Application Note

Measured in a cell proliferation assay using D10.G4.1 mouse helper T cells. The ED<sub>50</sub> for this effect is less or equal to 0.1 ng/ml.

## Properties

**Form** Liquid

**Buffer** PBS, 10% Glycerol, 1mM DTT

**Preservative** No preservatives

**Storage** Store as concentrated solution. Centrifuge briefly prior to opening vial. For short-term storage (1-2 weeks), store at 4°C. For long-term storage, aliquot and store at -20°C or below. Avoid multiple freeze-thaw cycles.

**Concentration** 0.5 mg/ml (Please refer to the vial label for the specific concentration.)

**Region/Sequence** N-terminal His-Tag; Length: 181 a.a. Sequence: MGSSHHHHHH SSGLVPRGSH MGSSIQGTSL LTQSPASLST YNDQSVSFVL ENGCVINVD DSGKDQEQDQ VLLRYYESPC PASQSGDQVD GKMLVMNMSP IKDIDIWLHA NDKDYSVELQ RGDVSPPEQA FVLHKKSSD FVSFECKNLP GTYIGVKDNQ LALVEEKDES CNNIMFKLSK I

**Expression System** E. coli

**Purity** > 95% by SDS-PAGE.

**Endotoxin** < 1.0 EU/µg (determined by LAL method)

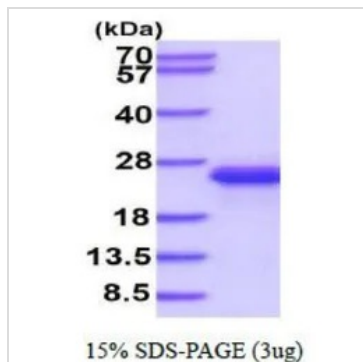
**Conjugation** Unconjugated

**Note** For In vitro laboratory use only. Not for any clinical, therapeutic, or diagnostic use in humans or animals. Not for animal or human consumption.



For full product information, images and publications, please visit our [website](#).

## DATA IMAGES



### GTx67065-pro Image

3  $\mu$ g of GTx67065-pro Mouse IL33 protein (active) by SDS-PAGE under reducing condition and visualized by coomassie blue stain



For full product information, images and publications, please visit our [website](#).