

## Human IL6 protein, His tag (active)

Cat. No. GTX67071-pro

**Applications** Functional Assay**Species** Human**Package**

10 µg

## Applications

## Application Note

Biological activity: Measured in a cell proliferation assay using TF-1 human erythroleukemic cells. The ED<sub>50</sub> for this effects 0.2 - 0.8 ng/ml.

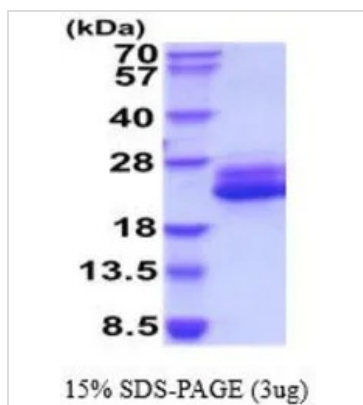
**Observed MW (kDa)** 18-28 kDa.

## Properties

**Form** Liquid**Buffer** PBS, 10% Glycerol**Preservative** No preservatives**Storage** Store as concentrated solution. Centrifuge briefly prior to opening vial. For short-term storage (1-2 weeks), store at 4°C. For long-term storage, aliquot and store at -20°C or below. Avoid multiple freeze-thaw cycles.**Concentration** 0.5 mg/ml (Please refer to the vial label for the specific concentration.)**Region/Sequence** C-terminal His-Tag; Length: 189 a.a. Sequence: VPPGEDSKDV AAPHRQPLTS SERIDKQIRY ILDGISALRK ETCNKS NMCE SSKEALAENN LNLPKMAEKD GCFQSGFN EE TCLVKIITGL LEFEVYLEYL QNRFESSEEQ ARAVQMSTKV LIQLQKKAK NLDAITTPDP TTNASLLTKL QAQNQLQDM TTHILRSFK EFLQSSLRAL RQMHHHHHH**Expression System** Baculovirus**Purity** > 95% by SDS-PAGE.**Endotoxin** < 1.0 EU/µg (determined by LAL method)**Conjugation** Unconjugated**Note** For In vitro laboratory use only. Not for any clinical, therapeutic, or diagnostic use in humans or animals. Not for animal or human consumption.

For full product information, images and publications, please visit our [website](#).

## DATA IMAGES



### GTX67071-pro Image

3 µg of GTX67071-pro Human IL6 protein (active) by SDS-PAGE under reducing condition and visualized by coomassie blue stain



For full product information, images and publications, please visit our [website](#).