

Mouse IL6 protein, His tag (active)

Cat. No. GTX67072-pro

Applications Functional Assay

Species Mouse

Package

50 µg

Applications

Application Note

Measured in a cell proliferation assay using M-NFS-60 mouse B cells. The ED₅₀ for this effects is less or equal to 0.1 ng/ml.

Observed MW (kDa) 18-28 kDa.

Properties

Form Liquid

Buffer PBS, 10% Glycerol

Preservative No preservatives

Storage Store as concentrated solution. Centrifuge briefly prior to opening vial. For short-term storage (1-2 weeks), store at 4°C. For long-term storage, aliquot and store at -20°C or below. Avoid multiple freeze-thaw cycles.

Concentration 0.5 mg/ml (Please refer to the vial label for the specific concentration.)

Region/Sequence C-terminal His-Tag; Length: 193 a.a. Sequence: FPTSQVRRGD FTEDTTPNRP VYTTSQVGGL ITHVLWEIVE MRKELCNGNS DCMNND DALA ENNLKLP EIQ RNDG CYQTGY NQEICLLKIS SGLLEYHSYL EYMKNNL KDN KKDKARVLQR DTETLIHIFN QEVKDLHKIV LPTPISNALL TDKLESQKEW LRTKTIQFIL KSLEEF LKVT LRSTRQTHHH HHH

Expression System Baculovirus

Purity > 95% by SDS-PAGE.

Endotoxin < 1.0 EU/µg (determined by LAL method)

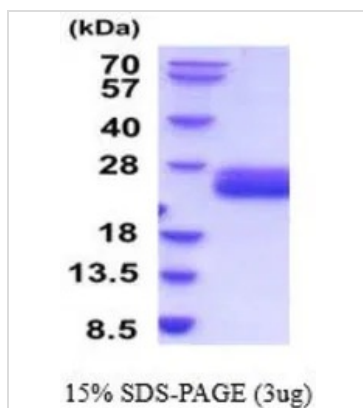
Conjugation Unconjugated

Note For In vitro laboratory use only. Not for any clinical, therapeutic, or diagnostic use in humans or animals. Not for animal or human consumption.



For full product information, images and publications, please visit our [website](#).

DATA IMAGES



GTX67072-pro Image

3 μ g of GTX67072-pro Mouse IL6 protein (active) by SDS-PAGE under reducing condition and visualized by coomassie blue stain



For full product information, images and publications, please visit our [website](#).