

## Rat IL6 protein, His tag (active)

Cat. No. GTX67073-pro

**Applications** Functional Assay**Species** Rat**Package**

5 µg

## Applications

## Application Note

Measured in a cell proliferation assay using M-NFS-60 mouse B cells. The ED<sub>50</sub> for this effects is less or equal to 0.1 ng/ml.

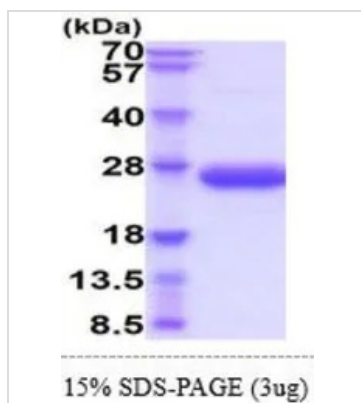
**Observed MW (kDa)** 18-28 kDa.

## Properties

**Form** Liquid**Buffer** PBS, 20% Glycerol**Preservative** No preservatives**Storage** Store as concentrated solution. Centrifuge briefly prior to opening vial. For short-term storage (1-2 weeks), store at 4°C. For long-term storage, aliquot and store at -20°C or below. Avoid multiple freeze-thaw cycles.**Concentration** 0.5 mg/ml (Please refer to the vial label for the specific concentration.)**Region/Sequence** C-terminal His-Tag; Length: 196 a.a. Sequence: ADPFPTSQVR RGDFTEDTTH NRPVYTTSQV GGLITYVLRE ILEMRELKCN GNSDCMNSDDALSENNLKP EIQRNDGCFQ TGYNQEICLL KICSGLLEFR FYLEFVKNNL QDNKKDKARVIQSNTETLVH IFKQEIKDSY KIVLPTPSN ALLMEKLESQ KEWLRTKTIQ LILKALEEFL KVTMRSTRQT HHHHHH**Expression System** Baculovirus**Purity** > 95% by SDS-PAGE.**Endotoxin** < 1.0 EU/µg (determined by LAL method)**Conjugation** Unconjugated**Note** For In vitro laboratory use only. Not for any clinical, therapeutic, or diagnostic use in humans or animals. Not for animal or human consumption.

For full product information, images and publications, please visit our [website](#).

## DATA IMAGES



### GTX67073-pro Image

3  $\mu$ g of GTX67073-pro Rat IL6 protein (active) by SDS-PAGE under reducing condition and visualized by coomassie blue stain



For full product information, images and publications, please visit our [website](#).