

## Human Interferon gamma protein (active)

## Cat. No. GTX67077-pro

<b>Applications</b>	Functional Assay
<b>Species</b>	Human

Package

100 µg

## Applications

## Application Note

Measured in a cytotoxicity assay using WiDr cells. The ED<sub>50</sub> for this effect is less or equal to 1.5 ng/ml.

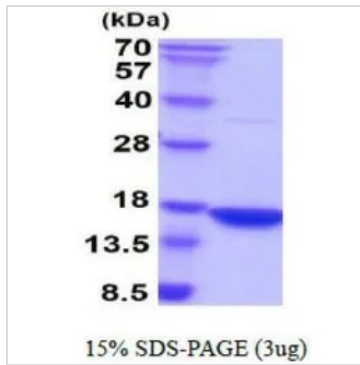
## Properties

<b>Form</b>	Liquid
<b>Buffer</b>	PBS, 10% Glycerol
<b>Preservative</b>	No preservatives
<b>Storage</b>	Store as concentrated solution. Centrifuge briefly prior to opening vial. For short-term storage (1-2 weeks), store at 4°C. For long-term storage, aliquot and store at -20°C or below. Avoid multiple freeze-thaw cycles.
<b>Concentration</b>	1 mg/ml (Please refer to the vial label for the specific concentration.)
<b>Region/Sequence</b>	Length: 144 a.a. Sequence: MQDPYVKEAE NLKKYFNAGH SDVADNGTLF LGILKNWKEE SDRKIMQSQI VSFYFKLFKN FKDDQSIQKS VETIKEDMNV KFFNSNKKKR DDFEKLTNYS VTDLNVQRKA IHELIQVMAE LSPAAKTGKR KRSQMLFRGR RASQ
<b>Expression System</b>	E. coli
<b>Purity</b>	> 95% by SDS-PAGE.
<b>Endotoxin</b>	< 1.0 EU/µg (determined by LAL method)
<b>Conjugation</b>	Unconjugated
<b>Note</b>	For In vitro laboratory use only. Not for any clinical, therapeutic, or diagnostic use in humans or animals. Not for animal or human consumption.



For full product information, images and publications, please visit our [website](#).

## DATA IMAGES

**GTX67077-pro Image**

3  $\mu$ g of GTX67077-pro Human Interferon gamma protein (active) by SDS-PAGE under reducing condition and visualized by coomassie blue stain



For full product information, images and publications, please visit our [website](#).