

Human Kallikrein 13 protein, His tag (active)

Cat. No. GTX67080-pro

Applications Functional Assay**Species** Human**Package**

20 µg

Applications

Application Note

Specific activity is > 8000 pmol/min/µg. One unit will hydrolyze 1.0 pmole of BAEE to Na-Benzoyl-L-arginine per minute at pH 8.0 at 25°C.

Observed MW (kDa) 28-40 kDa.

Properties

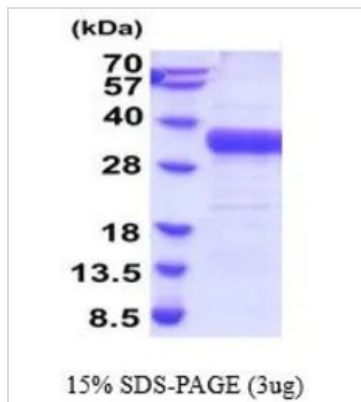
Form Liquid**Buffer** PBS, 10% Glycerol**Preservative** No preservatives**Storage** Store as concentrated solution. Centrifuge briefly prior to opening vial. For short-term storage (1-2 weeks), store at 4°C. For long-term storage, aliquot and store at -20°C or below. Avoid multiple freeze-thaw cycles.**Concentration** 0.5 mg/ml (Please refer to the vial label for the specific concentration.)**Region/Sequence**

C-terminal His-Tag; Length: 267 a.a. Sequence: GGVSQESSKV LNTNGTSGFL PGGYTCFPHS QPWQAALLVQ GRLLCGGVLV
HPKWVLTAAH CLKEGLKYYL GKHALGRVEA GEQVREVVHS IPHPEYRRSP THLNHDHDM LLELQSPVQL TGYIQTLP
HNNRLTPGTT CRVSGWGTTT SPQVNYPKTL QCANIQLRSD EECRQVYPGK ITDNMLCAGT KEGGKDSCEG DSGGPLVCNR
TLYGIVSWG D FPCGQPDRPG VYTRVSRVYL WIRETIRKYE TQQQKWLKGP QHHHHHHH

Expression System Baculovirus**Purity** > 90% by SDS-PAGE.**Endotoxin** < 1.0 EU/µg (determined by LAL method)**Conjugation** Unconjugated**Note** For In vitro laboratory use only. Not for any clinical, therapeutic, or diagnostic use in humans or animals. Not for animal or human consumption.

For full product information, images and publications, please visit our [website](#).

DATA IMAGES



GTX67080-pro Image

3 μ g of GTX67080-pro Human Kallikrein 13 protein (active) by SDS-PAGE under reducing condition and visualized by coomassie blue stain



For full product information, images and publications, please visit our [website](#).