

Rat LDHA protein, His tag (active)

Cat. No. GTX67083-pro

Applications Functional Assay**Species** Rat**Package**

10 µg

Applications

Application Note

Specific activity is > 200 units/mg, in which one unit will convert 1.0 µmole of pyruvate to L-lactate and beta-NAD per minute at pH 7.5 at 37°C.

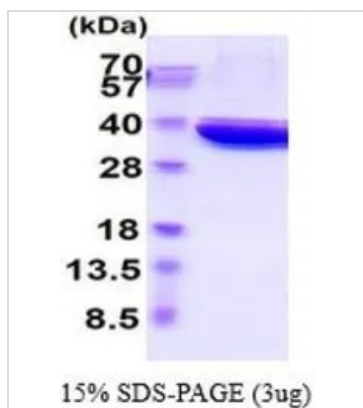
Observed MW (kDa) 28-40 kDa.

Properties

Form Liquid**Buffer** PBS, 20% Glycerol, 1mM DTT**Preservative** No preservatives**Storage** Store as concentrated solution. Centrifuge briefly prior to opening vial. For short-term storage (1-2 weeks), store at 4°C. For long-term storage, aliquot and store at -20°C or below. Avoid multiple freeze-thaw cycles.**Concentration** 0.25 mg/ml (Please refer to the vial label for the specific concentration.)**Region/Sequence** Full length protein, C-terminal His-Tag; Length: 340 a.a. Sequence: MAALKDQLIV NLLKEEQVPQ NKITVGVGA VGMACAISIL MKDLADELAL VDIEDKLKG EMDLQHGSL FLKTPKIVSS KDYSVTANSK LVIITAGARQ QEGESRLNLV QRNVNIFKFI IPNVVKYSPQ CKLLIVSNPV DILTYVAWKI SGFPPKNRVIG SGCNLSARF RYLMGERLGV HPLSCHGWVL GEHGDSSVPV WSGVNVAGVS LKSLNPQLGT DADKEQWKDV HKQVDSAYE VIKLKGYSW AIGLSVADLA ESIMKNLRRV HPISTMIKGL YGIKEDVFLS VPCILGQNGI SDVVKVLTLP DEEARLKKA DTLWGIQKEL QFLEHHHHHH**Expression System** Baculovirus**Purity** > 95% by SDS-PAGE.**Endotoxin** < 1.0 EU/µg (determined by LAL method)**Conjugation** Unconjugated**Note** For In vitro laboratory use only. Not for any clinical, therapeutic, or diagnostic use in humans or animals. Not for animal or human consumption.

For full product information, images and publications, please visit our [website](#).

DATA IMAGES



GTX67083-pro Image

3 μ g of GTX67083-pro Rat LDHA protein (active) by SDS-PAGE under reducing condition and visualized by coomassie blue stain



For full product information, images and publications, please visit our [website](#).