

Human M-CSF protein, His tag (active)

Cat. No. GTX67088-pro

Applications Functional Assay**Species** Human**Package**

10 µg

Applications

Application Note

Measured in a cell proliferation assay using M-NFS-60 mouse myelogenous leukemia lymphoblast cells. The ED₅₀ for this effect is less or equal to 3 ng/ml.

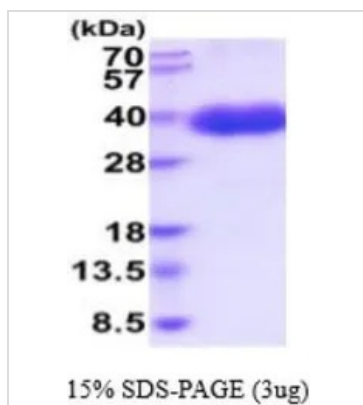
Observed MW (kDa) 28-40 kDa.

Properties

Form Liquid**Buffer** PBS, 10% Glycerol**Preservative** No preservatives**Storage** Store as concentrated solution. Centrifuge briefly prior to opening vial. For short-term storage (1-2 weeks), store at 4°C. For long-term storage, aliquot and store at -20°C or below. Avoid multiple freeze-thaw cycles.**Concentration** 0.25 mg/ml (Please refer to the vial label for the specific concentration.)**Region/Sequence** C-terminal His-Tag; Length: 231 a.a. Sequence: EEVSEYCSHM IGSGHLQSLQ RLIDSQMETS CQITFEFVDQ EQLKDPVCYL KKAFLLVQDI MEDTMRFRDN TPNAIAIVQL QELSLRLKSC FTKDYEEHDK ACVRTFYETP LQLEKVKNV FNETKNLLDK DWNIFSKNCN NSFAECSSQD VTKPDCNCL YPKAIPSSDP ASVSPHQPLA PSMAPVAGLT WEDSEGTEGS SLLPGEQPLH TVDPGSAKQR PPRLEHHHHH H**Expression System** Baculovirus**Purity** > 95% by SDS-PAGE.**Endotoxin** < 1.0 EU/µg (determined by LAL method)**Conjugation** Unconjugated**Note** For In vitro laboratory use only. Not for any clinical, therapeutic, or diagnostic use in humans or animals. Not for animal or human consumption.

For full product information, images and publications, please visit our [website](#).

DATA IMAGES



GTX67088-pro Image

3 μ g of GTX67088-pro Human M-CSF protein (active) by SDS-PAGE under reducing condition and visualized by coomassie blue stain



For full product information, images and publications, please visit our [website](#).