

# Mouse MDH2 protein, His tag (active)

**Cat. No. GTX67092-pro**

**Applications** Functional Assay

**Species** Mouse

**Package**

20 µg

## Applications

### Application Note

Specific activity is > 800 units/mg, and is defined as the amount of enzyme that cleaves 1.0 µmole of oxaloacetate and beta-NADH to L-malate and beta-NAD per minute at pH 8.0 at 37°C

## Properties

**Form** Liquid

**Buffer** PBS, 20% Glycerol

**Preservative** No preservatives

**Storage** Store as concentrated solution. Centrifuge briefly prior to opening vial. For short-term storage (1-2 weeks), store at 4°C. For long-term storage, aliquot and store at -20°C or below. Avoid multiple freeze-thaw cycles.

**Concentration** 1 mg/ml (Please refer to the vial label for the specific concentration.)

**Region/Sequence** N-terminal His-Tag; Length: 335 a.a. Sequence: MGSSHHHHHH SGLVPRGSH MAKVAVLGAS GGIGQPLSL LKNSPLVSRL TLYDIAHTPG VAADLSHIET RANVKGYP EQLPDCLKGC DVVVPAGVP RKPGMTRDDL FNTNATIVAT LTAACAQHCP EAMVCIANP VNSTIPITAE VFKKHGVYNP NKIFGVTTLD IVRANTFVAE LKGLDPAVN VPVIGGHAGK TIPLISQCT PKVDFPQDQL ATLTGRIQEA GTEVVKAKAG AGSATLSMAY AGARFVSLV DAMNGKEGVV ECSFVQSKET ECTYFSTPLL LGKKGLEKNL GIGKITPFEE KMIAEAIPEL KASIKKGEDF VKNMK

**Expression System** E. coli

**Purity** > 95% by SDS-PAGE.

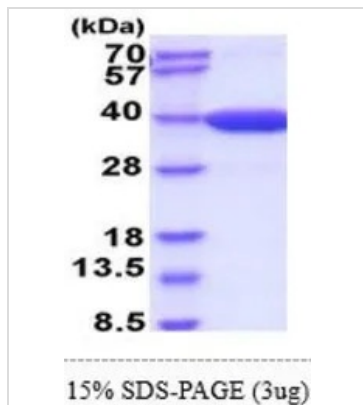
**Conjugation** Unconjugated

**Note** For In vitro laboratory use only. Not for any clinical, therapeutic, or diagnostic use in humans or animals. Not for animal or human consumption.



For full product information, images and publications, please visit our [website](#).

## DATA IMAGES



### GTX67092-pro Image

3  $\mu$ g of GTX67092-pro Mouse MDH2 protein (active) by SDS-PAGE under reducing condition and visualized by coomassie blue stain



For full product information, images and publications, please visit our [website](#).