

Human Parathyroid Hormone protein (active)

Cat. No. GTX67104-pro

Applications	Functional Assay
Species	Human

Package
10 µg

Applications

Application Note

Measured by its ability to induce cAMP accumulation in MC3T3/E1 mouse preosteoblast cells. The ED₅₀ for this effect is less than or equal to 50 ng/ml.

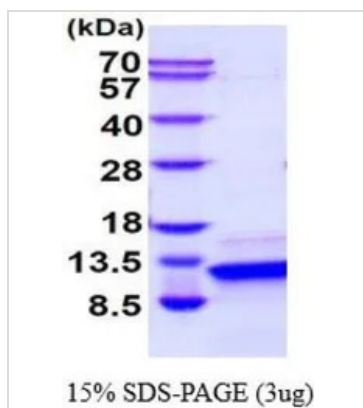
Properties

Form	Liquid
Buffer	PBS, 2mM EDTA
Preservative	No preservatives
Storage	Store as concentrated solution. Centrifuge briefly prior to opening vial. For short-term storage (1-2 weeks), store at 4°C. For long-term storage, aliquot and store at -20°C or below. Avoid multiple freeze-thaw cycles.
Concentration	1 mg/ml (Please refer to the vial label for the specific concentration.)
Region/Sequence	Length: 85 a.a. Sequence: MSVSEIQLMH NLGKHLNSME RVEWLRKKLQ DVHNFVALGA PLAPRDAGSQ RPRKKEDNVL VESHEKSLGE ADKADNVNLT KAKSQ
Expression System	E. coli
Purity	> 95% by SDS-PAGE.
Endotoxin	< 1.0 EU/µg (determined by LAL method)
Conjugation	Unconjugated
Note	For In vitro laboratory use only. Not for any clinical, therapeutic, or diagnostic use in humans or animals. Not for animal or human consumption.



For full product information, images and publications, please visit our [website](#).

DATA IMAGES



GTX67104-pro Image

3 µg of GTX67104-pro Human Parathyroid Hormone protein (active) by SDS-PAGE under reducing condition and visualized by coomassie blue stain



For full product information, images and publications, please visit our [website](#).