

# Mouse PIN1 protein, His tag (active)

**Cat. No. GTX67122-pro**

**Applications** Functional Assay

**Species** Mouse

**Package**

20 µg

## Applications

### Application Note

Specific activity is > 1200 nmol/min/mg, and is defined as the amount of enzyme that cleaves 1nmole of suc-AAFP-PNA per minute at 37°C in Tris-HCl (pH 8.0) using chymotrypsin.

## Properties

**Form** Liquid

**Buffer** PBS, 10% Glycerol

**Preservative** No preservatives

**Storage** Store as concentrated solution. Centrifuge briefly prior to opening vial. For short-term storage (1-2 weeks), store at 4°C. For long-term storage, aliquot and store at -20°C or below. Avoid multiple freeze-thaw cycles.

**Concentration** 1 mg/ml (Please refer to the vial label for the specific concentration.)

**Region/Sequence** Full length protein, N-terminal His-Tag; Length: 188 a.a. Sequence: MGSSHHHHHH SSGLVPRGSH MGSMADDEEKLP  
PPGWEKRMSR SSGRVYFNNH ITNASQWERP SGGSTVGGSS KNGQGEPKRV RCSHLLVKHS QSRPSSWRQ EKITRSKEEA  
LELINGYIQK IKSGEEDFES LASQFSDCSS AKARGDLGPF SRGQMOKPFE DASFALRTGE MSGPVFTDSG IHIILRTE

**Expression System** E. coli

**Purity** > 95% by SDS-PAGE.

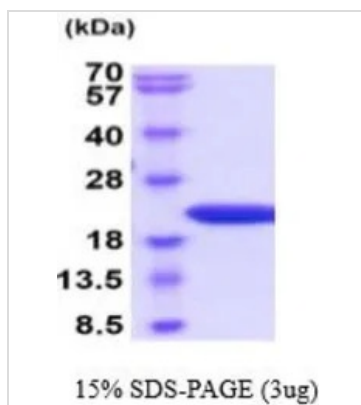
**Endotoxin** < 1.0 EU/µg (determined by LAL method)

**Conjugation** Unconjugated

**Note** For In vitro laboratory use only. Not for any clinical, therapeutic, or diagnostic use in humans or animals. Not for animal or human consumption.



For full product information, images and publications, please visit our [website](#).

**DATA IMAGES**

**GTX67122-pro Image**

3  $\mu$ g of GTX67122-pro Mouse PIN1 protein (active) by SDS-PAGE under reducing condition and visualized by coomassie blue stain



For full product information, images and publications, please visit our [website](https://www.genetex.com).