

Human PPIG protein, His tag (active)

Cat. No. GTX67129-pro**Applications** Functional Assay**Species** Human**Package**

100 µg

Applications

Application Note

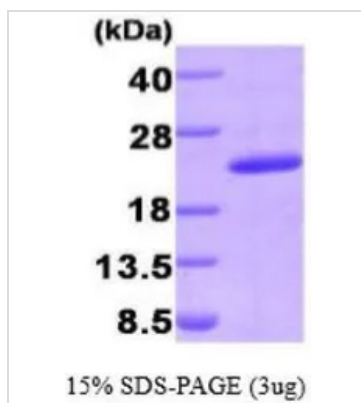
Specific activity is > 600 nmol/min/mg, and is defined as the amount of enzyme that cleaves 1nmol of suc-AAFP-PNA per minute at 37°C in Tris-HCl (pH 8.0) using chymotrypsin.

Properties

Form Liquid**Buffer** 20mM Tris-HCl, 10% Glycerol, 1mM DTT**Preservative** No preservatives**Storage** Store as concentrated solution. Centrifuge briefly prior to opening vial. For short-term storage (1-2 weeks), store at 4°C. For long-term storage, aliquot and store at -20°C or below. Avoid multiple freeze-thaw cycles.**Concentration** 1 mg/ml (Please refer to the vial label for the specific concentration.)**Region/Sequence** N-terminal His-Tag; Length: 195 a.a. Sequence: MGSSHHHHHH SGLVPRGSH MGIVQRPRC FFDIANNQP AGRVVFELFS DVCPKTCENF RCLCTGEKGT GKSTQKPLHY KSCLFHRVVK DFMVQGGDFS EGNGRGGESI YGGFFEDES AVKHNKEFL SMANRGKDTN GSQFFITTKP TPLDGHVHV FGQVISGQEV VREIENQKTD AASKPFAEVR ILSCG**Expression System** E. coli**Purity** > 95% by SDS-PAGE.**Conjugation** Unconjugated**Note** For In vitro laboratory use only. Not for any clinical, therapeutic, or diagnostic use in humans or animals. Not for animal or human consumption.

For full product information, images and publications, please visit our [website](#).

DATA IMAGES



GTX67129-pro Image

3 μ g of GTX67129-pro Human PPIG protein (active) by SDS-PAGE under reducing condition and visualized by coomassie blue stain



For full product information, images and publications, please visit our [website](#).