

Human PPIL1 protein, His tag (active)

Cat. No. GTX67131-pro

Applications Functional Assay**Species** Human**Package**

100 µg

Applications

Application Note

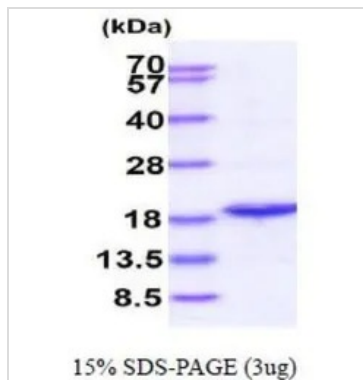
Specific activity is > 700 nmol/min/mg, and is defined as the amount of enzyme that cleaves 1nmole of suc-AAFP-PNA per minute at 37°C in Tris-HCl (pH 8.0) using chymotrypsin.

Properties

Form Liquid**Buffer** 20mM Tris-HCl, 20% Glycerol**Preservative** No preservatives**Storage** Store as concentrated solution. Centrifuge briefly prior to opening vial. For short-term storage (1-2 weeks), store at 4°C. For long-term storage, aliquot and store at -20°C or below. Avoid multiple freeze-thaw cycles.**Concentration** 1 mg/ml (Please refer to the vial label for the specific concentration.)**Region/Sequence** Full length protein, C-terminal His-Tag; Length: 174 a.a. Sequence: MAAIPDSWQ PPNVYLETSM GIIVLELYWK HAPKTCKNFA ELARRGYNG TKFHRIKDF MIQGGDPTGT GRGGASIYGK QFEDELHPDL KFTGAGILAM ANAGPDTNGS QFFVTLAPTQ WLDGKHTIFG RVCQGIGMVN RVGMVETNSQ DRPVDDVKII KAYPSGLEHH HHHH**Expression System** E. coli**Purity** > 95% by SDS-PAGE.**Conjugation** Unconjugated**Note** For In vitro laboratory use only. Not for any clinical, therapeutic, or diagnostic use in humans or animals. Not for animal or human consumption.

For full product information, images and publications, please visit our [website](#).

DATA IMAGES



GTX67131-pro Image

3 μ g of GTX67131-pro Human PPIL1 protein (active) by SDS-PAGE under reducing condition and visualized by coomassie blue stain



For full product information, images and publications, please visit our [website](#).