

Human PPM1A protein, His tag (active)

Cat. No. GTX67135-pro

Applications Functional Assay**Species** Human**Package**

100 µg

Applications

Application Note

Specific activity is > 1400 units/mg, and is defined as the amount of enzyme that hydrolyze 1.0 nmoles of p-nitrophenyl phosphate (pNPP) per minute at pH 7.5 at 37°C.

Properties

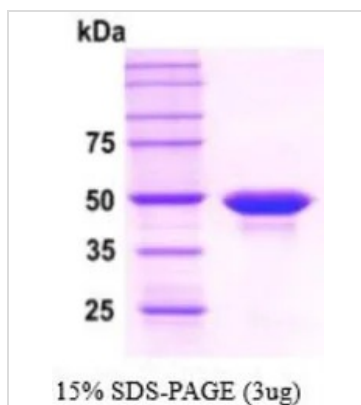
Form Liquid**Buffer** 10mM Tris-HCl, 50mM NaCl, 1mM MnCl₂, 20% Glycerol, 2mM DTT**Preservative** No preservatives**Storage** Store as concentrated solution. Centrifuge briefly prior to opening vial. For short-term storage (1-2 weeks), store at 4°C. For long-term storage, aliquot and store at -20°C or below. Avoid multiple freeze-thaw cycles.**Concentration** 1 mg/ml (Please refer to the vial label for the specific concentration.)**Region/Sequence**

Full length protein, N-terminal His-Tag; Length: 418 a.a. Sequence: MRGSHHHHHH GMASMTGGQQ MGRDLYDDDD KDRWILMGAF LDKPKMEKHN AQGQGNGLRY GLSSMQGWRV EMEDAHTAVI GLPSGLESWS FFAVYDGHAG SQVAKYCCEH LLDHITNNQD FKGSAGAPSV ENVKNGIRTG FLEIDEHMRV MSEKKHGADR SGSTAVGVLI SPQHTYFINC GDSRGLLCRN RKVHFFTQDH KPSNPLEKER IQNAGGSVMI QRVNGSLAVS RALGDFDYKC VHKGKPTQL VSPEPEVHDI ERSEEDDQFI ILACDGIWDV MGNEELCDFV RSRLEVTDL EKCNEVDVT CLYKGSRDNM SVILICFPNA PKVSPEAVKK EAELDKYLEC RVEEIIKKQG EGVPLDVHVM RTLASENIPS LPPGGELASK RNVIEAVYNR LNPYKNDDTD STSTDDMW

Expression System E. coli**Purity** > 95% by SDS-PAGE.**Endotoxin** < 1.0 EU/µg (determined by LAL method)**Conjugation** Unconjugated**Note** For In vitro laboratory use only. Not for any clinical, therapeutic, or diagnostic use in humans or animals. Not for animal or human consumption.

For full product information, images and publications, please visit our [website](#).

DATA IMAGES



GTX67135-pro Image

3 μ g of GTX67135-pro Human PPM1A protein (active) by SDS-PAGE under reducing condition and visualized by coomassie blue stain



For full product information, images and publications, please visit our [website](https://www.genetex.com).