

Human PPP1A protein, His tag (active)

Cat. No. GTX67136-pro

Applications Functional Assay

Species Human

Package

10 µg

Applications

Application Note

Specific activity: > 3000 units/mg. Enzymatic activity was confirmed by measuring the amount of enzyme hydrolyzing 1 nmole of p-nitrophenyl phosphate (pNPP) per minute at 37°C, pH 7.5 using 10mM of substrate.

Properties

Form Liquid

Buffer 50mM Tris-HCl, 200mM NaCl, 50% Glycerol, 1mM DTT, 0.1mM PMSF, 1mM MnCl₂

Preservative No preservatives

Storage Store as concentrated solution. Centrifuge briefly prior to opening vial. For short-term storage (1-2 weeks), store at 4°C. For long-term storage, aliquot and store at -20°C or below. Avoid multiple freeze-thaw cycles.

Concentration 0.2 mg/ml (Please refer to the vial label for the specific concentration.)

Region/Sequence Full length protein, N-terminal His-Tag; Length: 350 a.a. Sequence: MGSSHHHHHH SSGLVPRGSH MSDSEKLNLD SIIGRLLEVQ GSRPGKNVQL TENEIRGLCL KSREIFLSQP ILLELEAPLK ICGDIHQYY DLLRLFYGG FPPESNYLFL GDYVDRGKQS LETICLLAY KIKYPENFFL LRGNHECASI NRIYGFYDEC KRRYNIKLWK TFTDCFNCLP IAAIVDEKIF CCHGGLSPDL QSMEQIRIRIM RPTDVPDQGL LCDLLWSDPD KDVQGWGEND RGVSTFTGAE VVAKFLHKHD LDICRAHQV VEDGYEFFAK RQLVTLFSAP NYCGEFDNAG AMMSVDETLN CSFQILKPAD KNKGKYGQFS GLNPGGRPIT PPRNSAKAKK

Expression System E. coli

Purity > 80% by SDS-PAGE.

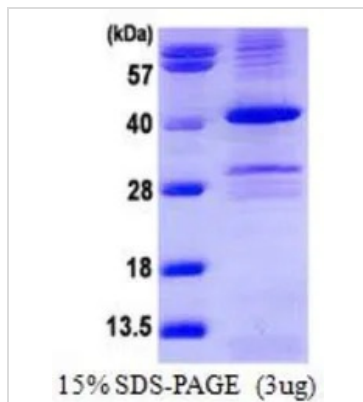
Conjugation Unconjugated

Note For In vitro laboratory use only. Not for any clinical, therapeutic, or diagnostic use in humans or animals. Not for animal or human consumption.



For full product information, images and publications, please visit our [website](https://www.genetex.com).

DATA IMAGES



GTX67136-pro Image

3 μ g of GTX67136-pro Human PPP1A protein (active) by SDS-PAGE under reducing condition and visualized by coomassie blue stain



For full product information, images and publications, please visit our [website](#).